



回收工作手推車 使用手冊

Recycling Trolley
User Guide

目錄

Contents

- 0 2 計劃簡介 Introduction
- 0 3 登記認證 Registrations
- 0 4 手推車功能 Functions of the trolley
- 0 8 折疊指南 Steps to fold up the trolley
- 1 0 推上斜路 Going down the slope
- 1 1 善用剎車裝置 Use of the brakes
- 1 2 推上壘 Uplifting to a kerb

- 
- 1 3 使用安全扣 Using seat belts to secure goods
 - 1 4 使用防雨罩 Using the rain cover
 - 1 6 鎖好塑膠箱 Locking the plastic box
 - 1 7 使用反光燈 Using the LED bike light
 - 1 8 防止誤用產品 Prevent misuse of the product
 - 2 0 小心路面交通 Be careful of the traffic
 - 2 1 遵守交通安全規則 Follow the Road Users' Code
- 

計劃簡介

Introduction



設計目的

這次設計的目的是要把現時拾荒長者使用的角鐵手推車，改善得更安全，省力及配合本地環境和他們的使用習慣。設計主要圍繞著手推車的人體工學、流暢度、儲物量以及保安問題上作出改善。盡量使用市場上可以買到的配件，以減輕成本及增加改裝的靈活性。

Design Objectives

The design aims to improve the existing iron trolleys used by elderly waste-pickers, making it safer, easier to use and better adapt to the urban landscape and their using practices. The redesign mainly takes into account considerations in ergonomics, driving performance, loading capacity and security. The components of the trolley should be readily available in the market in order to lower cost and enhance flexibility in changing parts.

登記認證 Registrations

所有回收車的用家都需要進行簡單的登記，以便社福機構追蹤其使用狀況。

All users of recycling trolleys will be registered for NGOs to track their usages and conditions.

登記資料如下：

Registration Info as follows:

姓名 Name :

聯絡電話 Telephone :

活動範圍 District of activities :

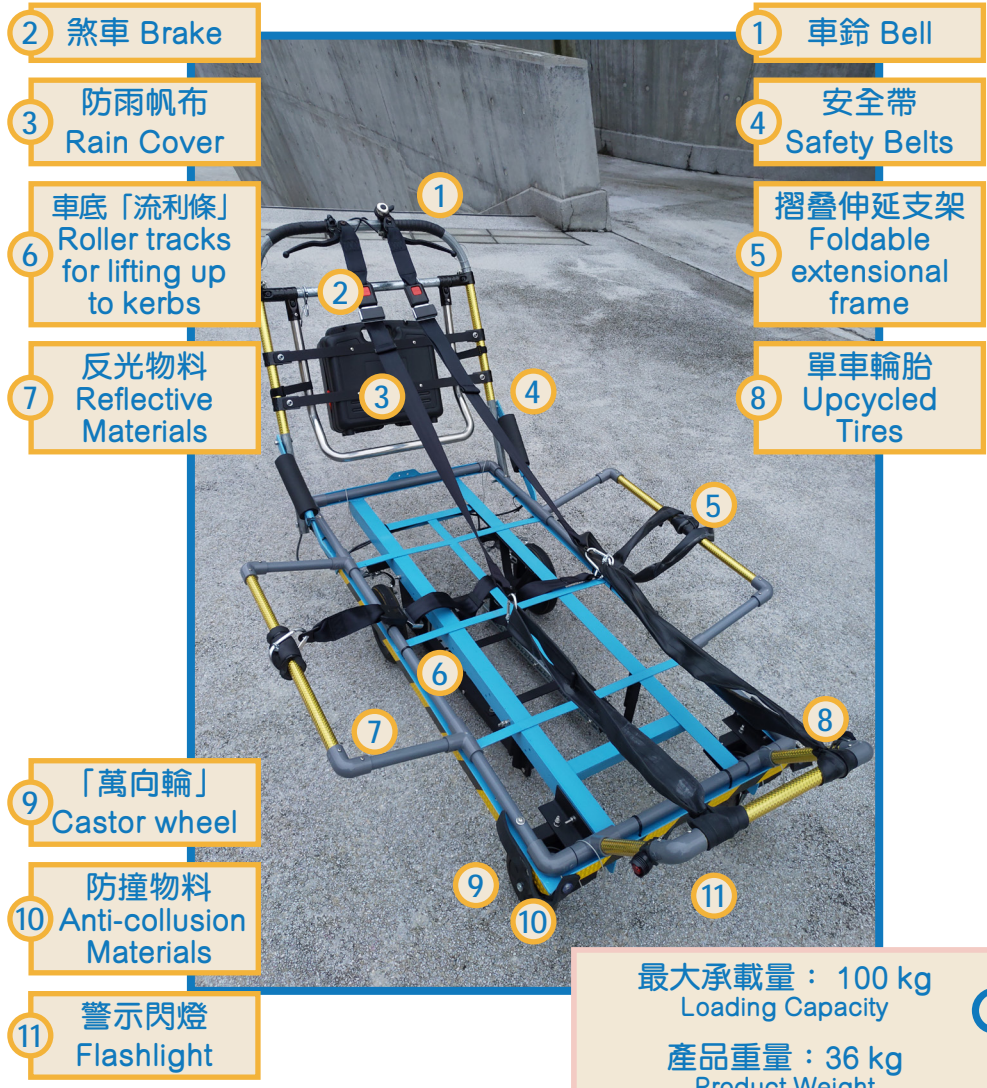
工作時間 Operation Hours :

經常光顧的社區回收店

Frequently visited community recycling stores :

手推車功能

Functions of the trolley



2 煞車 Brake

3 防雨帆布
Rain Cover

6 車底「流利條」
Roller tracks
for lifting up
to kerbs

7 反光物料
Reflective
Materials

9 「萬向輪」
Castor wheel

10 防撞物料
Anti-collision
Materials

11 警示閃燈
Flashlight

1 車鈴 Bell

4 安全帶
Safety Belts

5 摺疊伸延支架
Foldable
extensional
frame

8 單車輪胎
Upcycled
Tires

最大承載量：100 kg
Loading Capacity

產品重量：36 kg
Product Weight



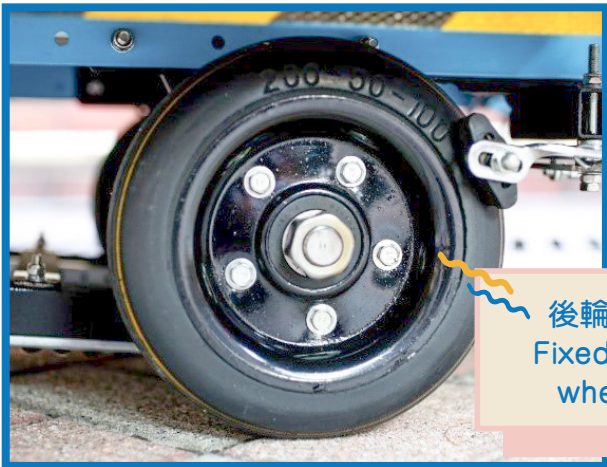
前輪萬向輪
Castor wheel
at the front end

兩條流利條
Two roller tracks



警示閃燈
Flashlight





後輪定向，方便轉向
Fixed-direction plastic
wheels at the back

剎車
Brakes



安全帶
Safety belts





加設額外把手
Additional handle

舊車胎
Upcycled tires



車鈴
Bell



折疊指南

Steps to fold up the trolley

1

STEP ONE
第一步



2

STEP TWO
第二步



3

STEP THREE
第三步



4

STEP FOUR
第四步



5

STEP FIVE
第五步



推上斜路

Going down the slope

▽ 落斜時請確保貨物不要
超重過高，安全帶扣緊

When going down the slope, please ensure the trolley is not overloaded and the safety belt is tightened up



▽ 用家可以按緊剎車控制杆
來減慢落斜的速度

It is easy to use the brakes to reduce the speed of the trolley when going down the slope



小心身後的交通狀況

Be aware of the traffic on the back

善用剎車裝置

Use of the Brakes (Slow down and stop)

- 握實剎車把手，
即可以停定手推車
Holding the brake handles tie to
stop the trolley



- 把控制杆扣於旁邊的設置的
綱索上，手推車即可停定
To park the trolley, the user can
tie the brake to the handle with
the steel wire ropes



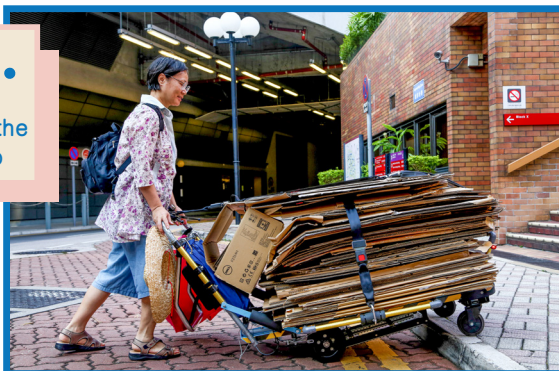
- 如在斜路使用，請確保
車子不會流後才好離開
Please ensure the trolley is
remaining stationary when you
park it on slope



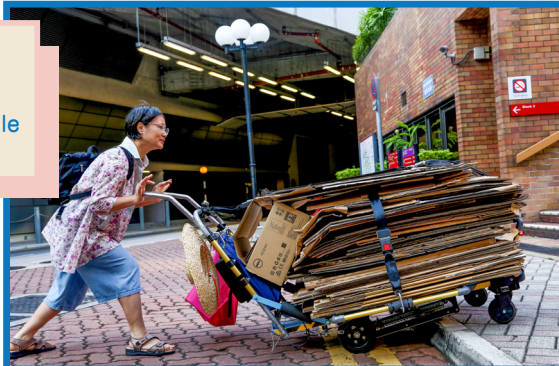
推上學

Uplifting to a kerb

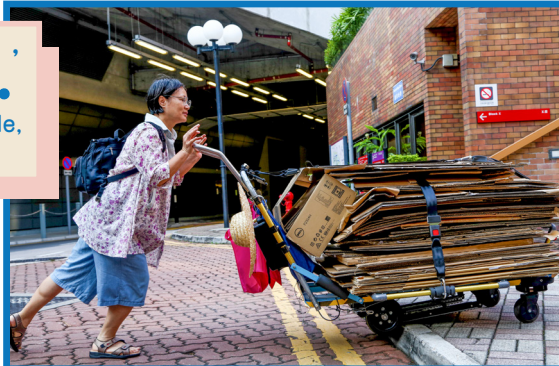
- ▽ 雙手向下推，
讓前轆跨上學上
- Push down the handle and let the front wheels uplift to the kerb



- ◀ 拉開輔助把手，
向前推
- Get ready the additional handle and push to the front



- ◀ 借助輔助把手，斜向上推，
就能成功上學
- With the help of additional handle, push up the trolley to the kerb



使用安全扣

Using Safty belts to secure goods

1

STEP ONE
第一步



2

STEP TWO
第二步



3

STEP THREE
第三步



使用防雨罩指示

Use the rain cover



1

STEP ONE
第一步



2

STEP TWO
第二步





3

STEP THREE
第三步



4

STEP FOUR
第四步



鎖好塑膠箱

Locking the plastic box



使用警示燈

Use Flashlight



天色陰暗時應亮起閃燈

Using the Flashlight when the weather is gloomy.

防止誤用產品

Prevent misuse of the product

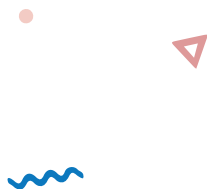


不要站立於手推車上

Do not stand on the trolley



貨物不要堆疊高於視線水平
Do not pile up the goods
higher than eye-levels

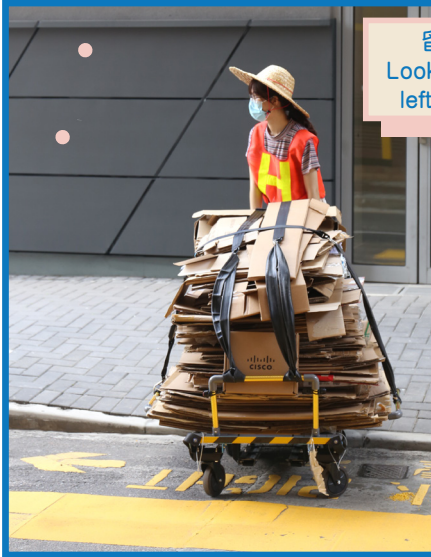


貨物要保持平衡
Maintain balance of the
cardboards



小心路面交通

Be careful of the traffic



留意左右兩邊
Look careful of both
left and right side



使用斑馬線
Using Zebra Cross-
ings

遵守交通安全守則

Follow the Road Users' Code

- 1 行人使用手推車，應特別小心，要為自己和他人的安全著想。
- 2 盡可能使用行人路，要遵守行人應該遵守的規則和指示，在過馬路時，更須注意此點。
- 3 如果你使用大型手推車，或者行人路非常擁擠或狹窄，你便應該在馬路上推動手推車。
- 4 在馬路上推車，要遵守駕駛人應該遵守的規則和指示。遵守交通燈號及交通標誌。切勿在單程路上朝相反方向推車，也不可在雙程路的右方推車。
- 5 不准進入「隧道區域」內。不准進入或使用快速公路。
- 6 注意停放的地方，可能妨礙或危及他人或交通的地方，例如會逼使行人踏出馬路的地方。

資料來源：運輸署

- 1 If you are using a trolley you need to take extra care to protect your safety and the safety of others.
- 2 Use the pavement whenever possible, follow the rules and advice for pedestrians, particularly when crossing the road.
- 3 If you are using a large cart or the pavement is crowded or too narrow, then you should use the roadway.
- 4 When using the road follow the rules and advice for drivers; it is important for your safety to obey traffic lights and traffic signs. Do not push or pull your cart or trolley the wrong way along a one-way road or on the right-hand side of a two-way road.
- 5 You must not enter or use either a Tunnel area or an Expressway.
- 6 Be aware the place to park your cart or trolley, ensure it may not cause an obstruction or danger to any person or traffic, for example by forcing pedestrians to step onto the roadway.

Reference to: Transport Department

POLYU JOCKEY CLUB
OPERATION **SOInno**
理大賽馬會社創「騷·In·廬」



主辦機構 Organiser



捐助機構 Funded by



香港賽馬會慈善信託基金
The Hong Kong Jockey Club Charities Trust
同心 同步 同進 RIDING HIGH TOGETHER

社創行動項目伙伴 Partner for Action Project



Waste Picker Platform