

INTERGENERATIONAL PLAY SPACE DESIGN COMPETITION

HKHS Prosperous Garden
Competition Brief

ORGANISER



FUNDED BY



香港賽馬會慈善信託基金
The Hong Kong Jockey Club Charities Trust
同心同步同進 RIDING HIGH TOGETHER

ACTION PROJECT CO-ORGANISER



HONG KONG
HOUSING SOCIETY
香港房屋協會

CONTENTS

1.0 Competition Background

1.1	About Us	6-8
1.2	Who Should Enter	8
1.3	Objectives	9
1.4	Season 4 Co-Creation Workshop Summary	10

2.0 Competition Details and Submission Requirements

2.1	Scope of Competition	12
2.2	Competition Schedule	13
2.3	Admission	14
2.4	Submission Specifications and Procedure	15-17
2.5	Evaluation Criteria	18-19
2.6	Question and Answer Period	20
2.7	Information and Inquiries	21

3.0 Appendix

3.1	Additional Site Information and Design Considerations	23-40
3.2	Suggested Disciplines	41
3.3	Scale Reference for Physical Models or Drawings	42
3.4	Registration Forms	43-44
3.5	Conceptual Design Statement	45
3.6	Template of Team Portfolio	46
3.7	Declaration Form	47-48
3.8	Checklist for Submission	49-52

4.0 Terms and Conditions

4.1	Disqualification	54
4.2	Power of Waiver	54
4.3	Personal Data Collection	54-55
4.4	Prizes and Awards	55
4.5	Exhibition and Publicity	56
4.6	Safekeeping of Submission Materials	56-57
4.7	General Remarks	57

SUPPORTING ORGANISATIONS



*In alphabetical order

1.0

COMPETITION BACKGROUND

- 1.1 About Us
- 1.2 Who Should Enter
- 1.3 Objectives
- 1.4 Season 4 Co-Creation Workshop Summary

1.1 About Us

Jockey Club Design Institute for Social Innovation (JCDISI)

JCDISI puts its strategic focus on tackling the combined impact of “Double Ageing” (ageing of people and building) in Hong Kong. The programme would engage the trans-disciplinary forces of academia, non-governmental organisations, professional bodies, members of the public, corporations and the Government to generate innovative ideas and practical actions.

PolyU Jockey Club “Operation Solnno”

Organised by the Jockey Club Design Institute for Social Innovation (JCDISI) at The Hong Kong Polytechnic University (PolyU) and funded by The Hong Kong Jockey Club Charities Trust, the 3-year social innovation project commenced in 2018 aims to innovate solutions, in collaboration with a wide spectrum of stakeholders, to respond to social challenges with a view to improving life in Hong Kong.

The Four Pillars of the Project



ONE FROM HUNDRED THOUSAND
「十萬分之一」社創研討會

“One from Hundred Thousand” — to organise a series of participatory symposia and workshops open to the public to collect views on social issues, facilitate discussion and co-create solutions. JCDISI names the platform based on the belief that if one person from every 100,000 people (i.e. 70+ persons from the 7 million+ population of Hong Kong) can sit together and contribute their time, passion, knowledge and creativity, they can innovate solutions for a specific problem.



ACTION PROJECTS
社創行動項目

“Solnno Action Projects” — to collaborate with non-government organisations, professional bodies and academia for developing innovative ideas generated at “One from Hundred Thousand” into designs or prototypes.



DESIGN EDUCATION
啟迪創新習作

“Solnno Design Education” — to introduce social innovation and design thinking into the curriculum of secondary school education to nurture students as social innovators. Social innovation workshops will be organised for students and teachers and multi-media interactive teaching kits will be developed in this regard.



KNOWLEDGE PLATFORM
社創知識平台

“Solnno Knowledge Platform” — to document and disseminate for public use the social innovation experience and knowledge generated from the programme through various formats, including academic papers, videos, design and practice guidelines, case study reports, workshops, regional and international conferences and exhibitions.

Hong Kong Housing Society (HKHS)

Hong Kong Housing Society (HKHS) has always been a strong advocate of quality housing. In light of Hong Kong's ageing population, HKHS has initiated a range of housing projects on "ageing in place" since the 1990s, bringing upon better quality of life to elderly people across the different socio-economical backgrounds, as well as promoting intergenerational harmony. Among those, the Ageing-in-Place Scheme has been overwhelmingly successful since its inception in 2012, promoting the wellbeing of elderly tenants while remaining at their familiar homes as long as they wish. Through mobilising community participation, partnership with the government departments, welfare organisations, healthcare service providers as well as academics, a one-stop service and concern network for the elderly residents is established to fulfil their needs in housing, healthcare and social support, so as to help them age in place.

In 2005, HKHS set up the Housing Society Elderly Resources Centre (ERC) in the Prosperous Garden, the first-of-its-kind facility in Hong Kong to promote "ageing in place". Through education programmes, health screening, professional consultation and research by occupational therapists and social workers, ERC aims to promote the concept of "age-friendly home". In 2017, ERC introduced the pioneering MIND-Friendly Home Exploration Centre - also first of its kind in Hong Kong to demonstrate how to adopt a dementia-friendly home design that supports caregivers and allows elderly with dementia to lead a happy and independent life.

More about the
[AIP Scheme](#):



(Chinese Version Only)

1.0 COMPETITION BACKGROUND

The Intergenerational Play Space Design Competition | HKHS Prosperous Garden is a design competition organised by the Jockey Club Design Institute for Social Innovation (JCDISI) together with the Hong Kong Housing Society (HKHS) as "Action Project Co-Organiser". The Competition is an Action Project under the PolyU Jockey Club "Operation Solnno" stemmed from JCDISI's "Intergenerational Play Space" co-creation workshops and symposium conducted in 2019. This is a Two-stage competition divided into University and Professional Categories. Professionals and university students shall form into teams to develop a design proposal of an innovative 'Intergenerational Play Space'.

Participants are required to provide a Design Proposal covering the following key aspects:

1. A Master Plan – the plan should elaborate a playscape/ spatial design that creates an inviting environment for elderly users and promotes intergenerational play and interaction;
2. Select and/or design creative, safe and easy-to-maintain intergenerational play equipment and/or features that encourage physical exercise of elderly users; and
3. Application of Internet of Things (IoT) and technology– it should encourage the use of the space and monitor the effectiveness of these new features in stimulating intergenerational play and exercise for elderly users.



Site and Context

Prosperous Garden, 3 Public Square Street, Yau Ma Tei, Kowloon

Prosperous Garden is located at the original site of the Six Streets in Yau Ma Tei. 112 early post-war buildings were claimed by the Government in 1975 and handed over to HKHS under a non-renewable lease for redevelopment. To date, Prosperous Garden provides 157 Elderly Persons' Flats - about 10% of all the residential units in the site.

The Design Competition encourages designers from all disciplines to form multi-disciplinary teams to redesign the public space at Prosperous Garden, with a view to provide the hardware to allow HKHS' "ageing in place" initiative to be extended outdoors to promote elderly tenants' well-being, resilience to health decline and avoid premature institutionalisation.

1.2 Who Should Enter

University Category

Applicants currently studying in universities and possessing valid student identity cards

Professional Category

Applicants currently employed in a registered company or organisation

1.3 Objectives

The Prosperous Garden public space is planned to be a central point and gathering place for residents of all ages. It is therefore important to enhance the functionality of public space by upgrading the outdoor play facilities to encourage intergenerational play and support ageing in place.

An upgraded design of the Prosperous Garden Public Space should:

1. Provide an overall park environment that would increase elderly users' confidence and incentivise them to do more outdoor physical exercise;
2. Encourage the young and old to use the park and its play equipment together for more proactive intergenerational interactions and play;
3. Reinforce the positive behaviour of the elderly users by showing them evidence of the benefits to their well-being achieved by their utilisation of the intergenerational play space;
4. Strengthen community social cohesion and residents' sense of belonging through increased interaction; and
5. Serve as a prototype that would facilitate the transformation and creation of more intergenerational play spaces in Hong Kong.



1.4 Season 4 Co-Creation Workshop Summary



Design Considerations for “Intergenerational Play Space”

The teams from the Season 4 co-creation workshop consolidated six design considerations for Intergenerational Play Space. Information about the project site can be found in **Appendix 3.1**. Design teams should intensify the six design considerations in developing their design schemes.

1 SPATIAL INTEGRATION

Integrate play equipment designed for users of different ages in the area. Replace hard boundaries with soft boundaries, such as replacing fences with colours.

2 “AGE-NEUTRAL” DESIGN

The use of multi-purpose, age-neutral design will increase the facility provision and promote intergenerational interaction and more efficient use of space.

3 INTERGENERATIONAL PLAY EQUIPMENT

Encourage intergenerational interaction with equipment combining elderly fitness and children play.

4 MAKE USE OF UNIQUE SPATIAL CHARACTERISTICS

Interactive features such as chalkboards can be integrated into vertical walls; nets and climbing rocks can be placed between winding trails to offer more opportunities for interaction.

5 MAKE USE OF AVAILABLE TECHNOLOGY

Users of all ages can benefit from technology such as digital and interactive games, health tracking or augmented reality (AR).

6 USER-CENTRIC MANAGEMENT

Understand the community’s needs to enable more considerate public space management and design.

2.0

COMPETITION DETAILS AND SUBMISSION REQUIREMENTS

- 2.1 Scope of Competition
- 2.2 Competition Schedule
- 2.3 Admission
- 2.4 Submission Specifications and Procedure
- 2.5 Evaluation Criteria
- 2.6 Question and Answer Period
- 2.7 Information and Inquiries

2.0 COMPETITION DETAILS AND SUBMISSION REQUIREMENTS

2.1 Scope of Competition

Teams must fulfil the vision and objectives stated in the Competition Brief, and demonstrate a thorough understanding of all requirements, including the opportunities, constraints, as well as urban and community contexts of the site (See **Appendix 3.1**).

The competition is divided into two stages:

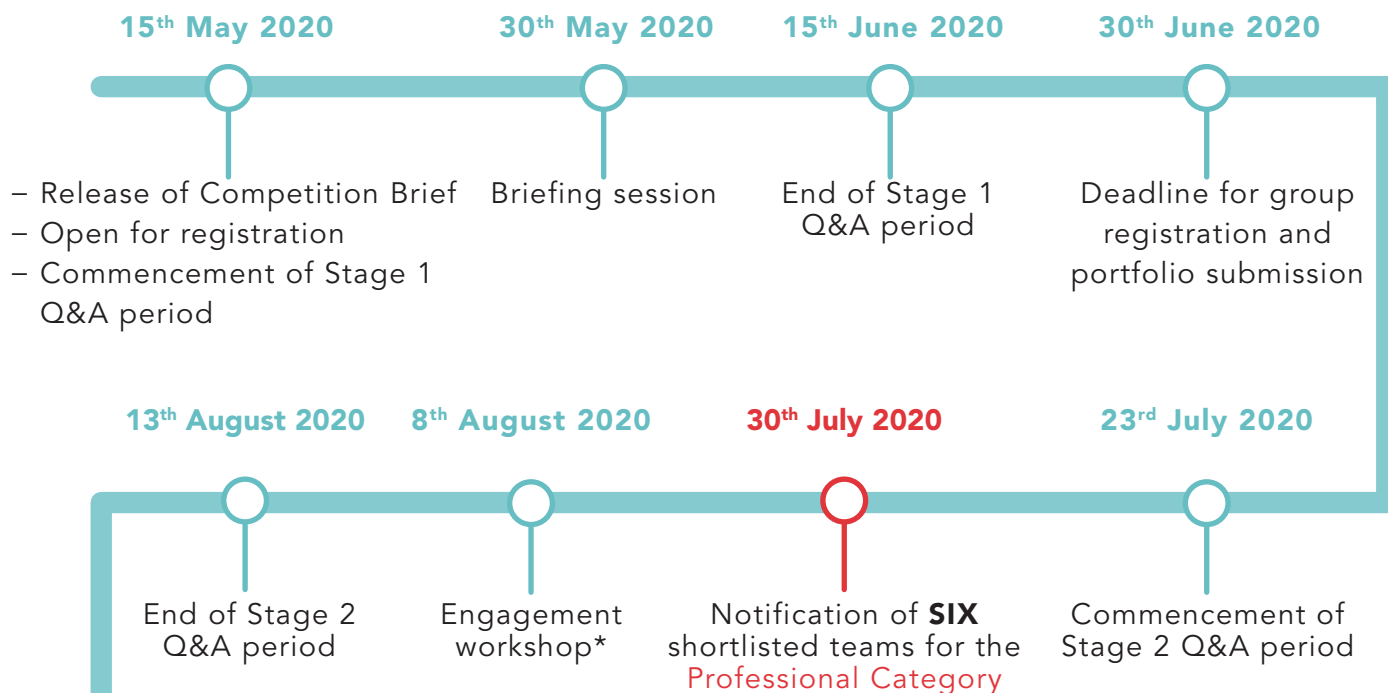
Category	Stage	Submission Period	Description
University Category	Stage 1	15 th May 2020 to 30 th June 2020	Registration and submission of conceptual design statement for qualification assessment.
	Stage 2	30 th July 2020 to 9 th October 2020	Submission of Design Proposal. The Jury Panel will expect appealing and feasible ideas and concepts for Prosperous Garden.
Professional Category	Stage 1	15 th May 2020 to 30 th June 2020	Registration and submission for shortlisting. A maximum of SIX entries will be shortlisted and advance to Stage 2.
	Stage 2	30 th July 2020 to 9 th October 2020	Submission of a detailed design proposal and a tentative budget plan. The Jury Panel will expect appealing and feasible ideas and concepts in compliance with the Competition Brief and local statutory requirements.

The Competition Brief is only available in English. Chinese-only statement will be accepted in Stage 1. For Stage 2, all submitted materials shall be in English, complemented with Chinese or other languages if necessary. The team shall be responsible for its translation.

2.2 Competition Schedule

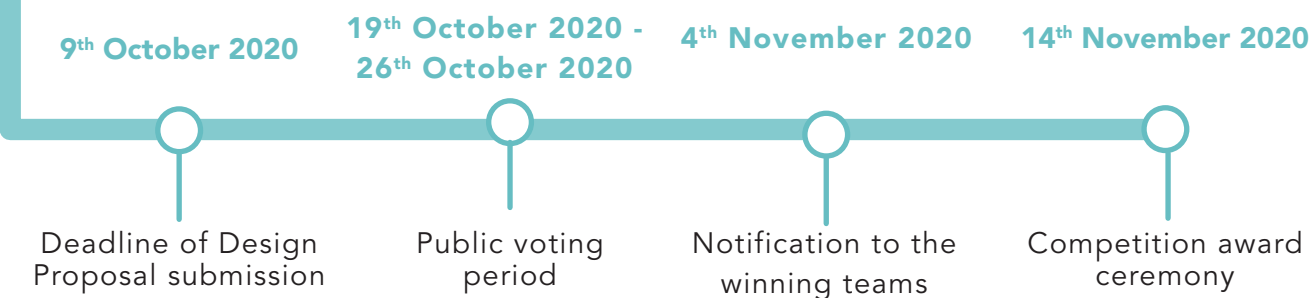
Stage 1

(See 2.4.1 Stage 1 - Registration & Team Submission)



Stage 2

(See 2.4.2 Stage 2 - Submission Procedure)



* For the professional category, at least two team members must attend the engagement workshop. For the university category, each team is advised to attend the engagement workshop.

2.0 COMPETITION DETAILS AND SUBMISSION REQUIREMENTS

2.3 Admission

The Competition is open for all students and professionals in Hong Kong and overseas. To increase the functionality and applicability of the design proposal - which should promote intergenerational play, active ageing and healthy ageing – each team is strongly recommended to include members with expertise in environmental design, playground design, play and exercise equipment design, public health, healthcare, elderly care, rehabilitation science and Internet of Things (IoT). (See **Appendix 3.2** for suggested disciplines.)

A) Qualification for University Category

- In teams of 3 to 6 persons, assigning **one** team member as the point of contact (POC). The POC is responsible for the team's communication with the organiser.
- Applicants shall currently be receiving tertiary education and possess valid student identity cards.
- The design competition encourages cross-disciplinary team composition. Each team shall consist of students from two or more disciplines.

B) Qualification for Professional Category

- Applicants shall currently be a member of the listed organisation or employed in a registered company or organisation
- One of the team members shall be a registered member of one of the following professional bodies:
 - Hong Kong Institute of Architects (HKIA)
 - Hong Kong Institute of Engineering (HKIE)
 - Hong Kong Institute of Housing (HKIH)
 - Hong Kong Institute of Landscape Architects (HKILA)
 - Hong Kong Institute of Planners (HKIP)
 - Hong Kong Institute of Surveyors (HKIS)
 - Hong Kong Institute of Urban Design (HKIUD)
 - Hong Kong Occupational Therapy Association (HKOTA)
 - Hong Kong Physiotherapy Association (HKPA)or other similar qualified professional bodies outside Hong Kong.

2.4 Submission Specifications and Procedure

2.4.1) Stage 1 - Registration & Team Submission

The registration shall be applied online on the official [Competition Website](#). Please download a copy of Design Competition Stage 1 Submission Documents from the [website](#). Upon registration, a participating team confirms that all team members understand and agree to be bound by the terms and conditions stipulated under the Competition.

In Stage 1, participants are required to complete the online registration form and upload the following corresponding documents:

University Category

The following items must be submitted for **Stage 1** in PDF format:

1. A maximum of two (2) pages of "A4" Registration Form(A) from each participating member;(Appendix 3.4)
2. Conceptual Design Statement completed in English or Chinese;(Appendix 3.5)
3. A maximum of three (3) pages of "A3" Team Portfolio (in landscape format) with the font size of 12;(Appendix 3.6) and
4. Declaration Form signed by all participating team member(s).(Appendix 3.7)

Professional Category

The following items must be submitted for **Stage 1** in PDF format:

1. A maximum of two (2) pages of "A4" Registration Form(B) from each participating member;(Appendix 3.4)
2. Conceptual Design Statement completed in English or Chinese;(Appendix 3.5)
3. A maximum of three (3) pages of "A3" Team Portfolio (in landscape format) with the font size of 12;(Appendix 3.6) and
4. Declaration Form signed by all participating team member(s).(Appendix 3.7)

Deadline: 12:00 noon, 30th June 2020 (Hong Kong time).

Incomplete submissions shall not be considered.

Successful participating teams will receive an entry code for Stage 2 submission. The identity of all participating teams shall only be revealed to the Jury Panel after a shortlist of entries for Stage 2 is confirmed.

For Professional Category: The Jury Panel will shortlist a maximum of **SIX** entries to advance to Stage 2. The shortlisted teams will be notified via email and/or phone call before 30th July 2020.

2.0 COMPETITION DETAILS AND SUBMISSION REQUIREMENTS

2.4.2) Stage 2 - Submission Procedure

In Stage 2, the shortlisted teams are required to deliver their final Design Proposal to the Competition Secretariat Office BY POST OR HAND.

University Category

The **HARD COPY** of each of the following items must be submitted in **Stage 2**:

1. A maximum of two (2) pages of "A2" Panels (in landscape or portrait format) with the board sequence labelled at the back of each board (1 of 2 and 2 of 2);
2. A maximum of ten (10) pages of "A3" Detail Design Proposal;
3. One (1) page of "A4" Tentative Budget Breakdown*; and
4. A CD/DVD/Thumb drive containing soft copies of the above items 1, 2 and 3 in PDF format.

Supporting design items but not limited to:

- A physical model (with entry code labelled at the bottom) / virtual reality / video

Professional Category

The **HARD COPY** of each of the following items must be submitted in **Stage 2**:

1. A maximum of two (2) pages of "A2" Panels (in landscape or portrait format) with the board sequence labelled at the back of each board (1 of 2 and 2 of 2);
2. A maximum ten (10) pages of "A3" Detail Design Proposal;
3. One (1) page of "A4" Tentative Budget Breakdown*;
4. A CD/DVD/thumb drive containing soft copies of the above items 1, 2 and 3 in PDF format; and
5. One (1) physical model (max. dimension: 500mmW x 500mmL x 300mmH) with entry code labelled at the bottom.

Supporting design items but not limited to:

- Virtual reality / video

**To ensure all Design Proposals are on a similar scale, the budget ceiling for the upgrading work is HK\$8 million.*

Deadline: 18:00, 9th October 2020 (Hong Kong time).

Incomplete submissions shall not be considered.

Submission: Each proposal must be submitted in a sealed envelope clearly marked with "**PG Design Competition – University Category – [Entry code] - Stage two**" for University Category submissions or "**PG Design Competition – Professional Category – [Entry code] - Stage two**" for Professional Category Submissions.

2.0 COMPETITION DETAILS AND SUBMISSION REQUIREMENTS

Address of Competition Secretariat Office:

G/F, 50-54 Lok Ku Road, Sheung Wan, Hong Kong

Opening hours of Competition Secretariat Office:

10:00 – 18:00 (Mondays to Fridays)

Closed on Saturdays, Sundays and public holidays

Winning teams will be notified via email and/or phone call before 4th November 2020.

2.4.3) Expenses and Reimbursement

- 2.4.3.1) Each team is responsible for their expenses in Stage 1 of the Competition
- 2.4.3.2) Each shortlisted team will be reimbursed for their expenses incurred during Stage 2 of the Competition. Such expenses include necessary printing, video shooting, engagement workshop materials and mock up/prototypes in preparing and delivering the final Design Proposal. The maximum reimbursable amount for each team is HK\$3,000. Any claims above HK\$3,000 shall NOT be considered.*
- 2.4.3.3) The winning teams will be given a maximum of HK\$15,000 to develop exhibits, such as physical models and/or prototypes for exhibition at PolyU / HKHS exhibition room (exact venue to be confirmed).

** A valid proof of expenses must be presented for reimbursement and deemed as necessary by JCDISI and HKHS for this Design Competition. JCDISI and HKHS reserve the right to reject any unreasonable claims.*

2.0 COMPETITION DETAILS AND SUBMISSION REQUIREMENTS

2.5 Evaluation Criteria

The Design Competition includes a two-stage assessment process. The marking schemes for Stage 1 and Stage 2 are as follows:

2.5.1) Stage 1 – Team composition, experience and creativity (University Category)	
Attribute	Description
Team Capacity	– Cross-disciplinary team
Relevant Project Experience	– Open space and community project experience – Participatory design experience
Creativity	– Innovative design ideas in spatial design and programme development – Appropriate and applicable to the site – Originality of entry

2.5.2) Stage 1 – Team composition, experience and creativity (Professional Category)		
Attribute	Description	Weighting
Team Capacity	– Cross-disciplinary team	30%
Relevant Project Experience	– Open space and community project experience – Participatory design experience	30%
Creativity	– Innovative design ideas in spatial design and programme development – Appropriate and applicable to the site – Originality of entry – Application of relevant technology	40%

**Incomplete submissions shall fail to meet the assessment and hence be disqualified.*

***To ensure all Design Proposals are on a similar scale, the budget ceiling for the upgrading work is HK\$8 million.*

2.5.3) Stage 2 – Design Proposal (University and Professional Categories)		
Attribute	Description	Weighting
Academic Research Value and Social Impact	<ul style="list-style-type: none"> – Social impact – Proof of concept on research related to intergenerational play space – Prototype scheme evaluation and review mechanism 	10%
Thematic Spatial Design	<ul style="list-style-type: none"> – Site utilisation and layout – Equipment design – Landscape design – Holistic management consideration – Promotion of intergenerational interaction – Community engagement and strategies 	20%
Involvement of Local and Nearby Community	<ul style="list-style-type: none"> – Participation of Prosperous Garden residents, resident groups and neighbourhood stakeholders in the design process* – Reflection and revision based on organisers and jury's feedback 	15%
Reflection and/or Reference of Season 4 Co-creation Workshop Results	<ul style="list-style-type: none"> – Intensification of the six design intergenerational play space considerations gathered in Season 4 co-creation workshops 	15%
Practicality of Implementation	<ul style="list-style-type: none"> – Consideration on site constraints, challenges and opportunities – Promotion of "Ageing-In-Place" concept – Consideration on safety and venue management – Integration of insights and comments from the panel – Cost effectiveness (Time and Cost) 	20%
Cost Estimation**	<ul style="list-style-type: none"> – Budget breakdown details – Design and build cost – Upgrading on works management 	20%

* All engagement activities with the Prosperous Garden community should only take place during the engagement workshop on 8th August 2020. Any additional engagement activities must seek prior approval from JCDISI and HKHS.

**To ensure all Design Proposals are on a similar scale, the budget ceiling for the upgrading work is HK\$8 million.

2.0 COMPETITION DETAILS AND SUBMISSION REQUIREMENTS

2.6 Question and Answer Period

Participants may submit questions and requests for clarification by email. Answers and reference materials will be uploaded to JCDISI's website.

	Q&A Submission Period	Response to Queries	Category
Stage 1	15 th May 2020 to 15 th June 2020	TBC	University Category and Professional Category
Stage 2	23 th July 2020 to 13 th August 2020	TBC	University Category and Professional Category

The written responses to the queries will form an integral part of the Competition Brief and shall be extended to the evaluation criteria and the Jury Panel.

Participants are strongly advised to attend the briefing session scheduled on 30th May 2020 to obtain further information and tips about the Competition. The briefing session will be held via Zoom at 11:00. Please refer to the competition website for registration and details.

2.7 Information and Inquiries

This Competition Brief, additional and update information on the project site are available from the JCDISI's official website.

For inquiries, please contact Competition Secretariat Office by:

Business hours: 10:00 – 18:00 (Mondays to Fridays)

Phone: +852 2803 0991 (Ms. Yuen)

Email: pg.designcomp@polyu.edu.hk

Design Competition website:

<https://www.polyujcsoinno.hk/en/pg-designcomp>

Facebook: <https://www.facebook.com/pg.designcomp>

Competition Website:



(English Version)

3.0

APPENDIX

- 3.1 Additional Site Information and Design Considerations
- 3.2 Suggested Disciplines
- 3.3 Suggested Scale Reference for Physical Model or Drawings
- 3.4 Registration Forms
- 3.5 Conceptual Design Statement
- 3.6 Template of Previous Project Documents
- 3.7 Declaration Form
- 3.8 Submission Checklist

APPENDIX 3.1 | Additional Site Information and Design Considerations



"One from Hundred Thousand"

Social Innovation Symposium Series Season 4 –
Intergenerational Play Space

Prosperous Garden | Information Pack

**Prepared by Jockey Club Design Institute for Social Innovation (JCDISI)
May 2019**

Disclaimer

All materials provided in this information pack are intended only to provide general information and a contextual overview of the sites as references for participants of Intergenerational Play Space Design Competition | HKHS Prosperous Garden.

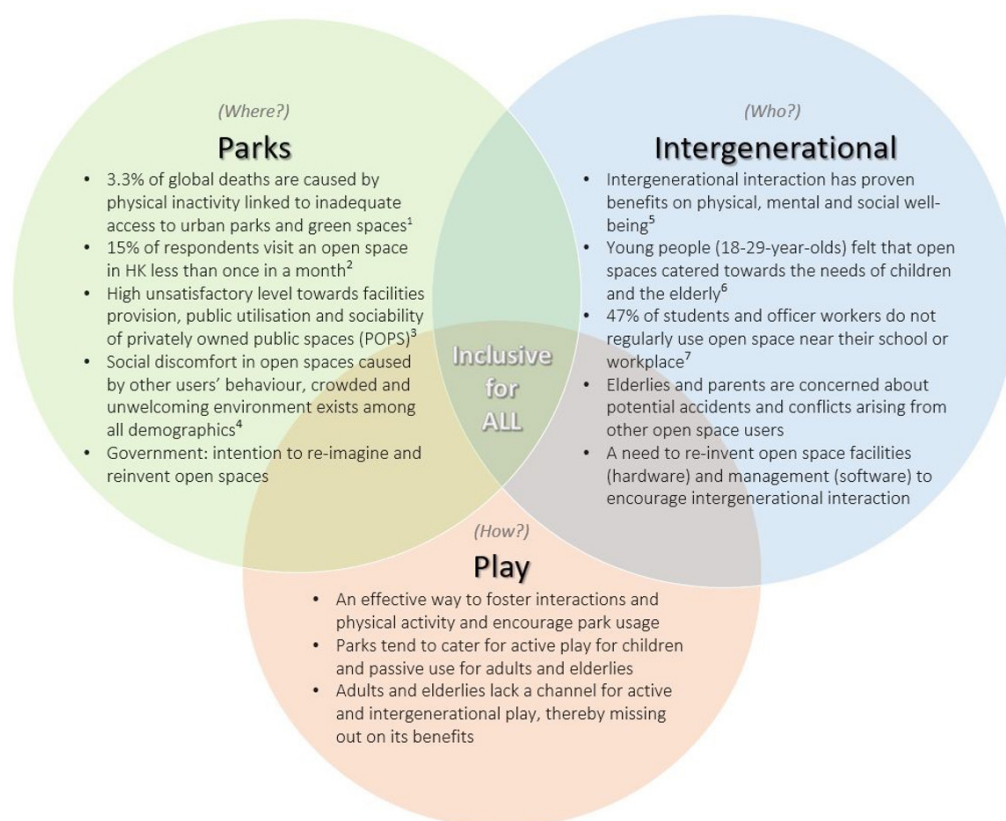
JCDISI specifically disclaims any liability incurred as a consequence of using any information given in this information pack.

Objective and Definition

Objective To co-design an **Intergenerational Play Space** for Prosperous Garden to promote ageing in place.

Definition 'Play space' refers to an environment where **play can take place**, including but not limited to playgrounds, parks and privately-owned public spaces (POPS).

Why "Intergenerational Play Space" ?



¹ [World Health Organisation](#)

² Civic Exchange Open Space Opinion Survey 2018, p. 34

³ HKPSI Privately-Owned Public Space Audit Report 2018, p. 3

⁴ Civic Exchange Open Space Opinion Survey 2018, p. 79

⁵ Kumiko Morita, Minako Kobayashi, BMC Geriatrics. 2013

[Interactive programs with preschool children bring smiles and conversation to older adults: time-sampling study](#)

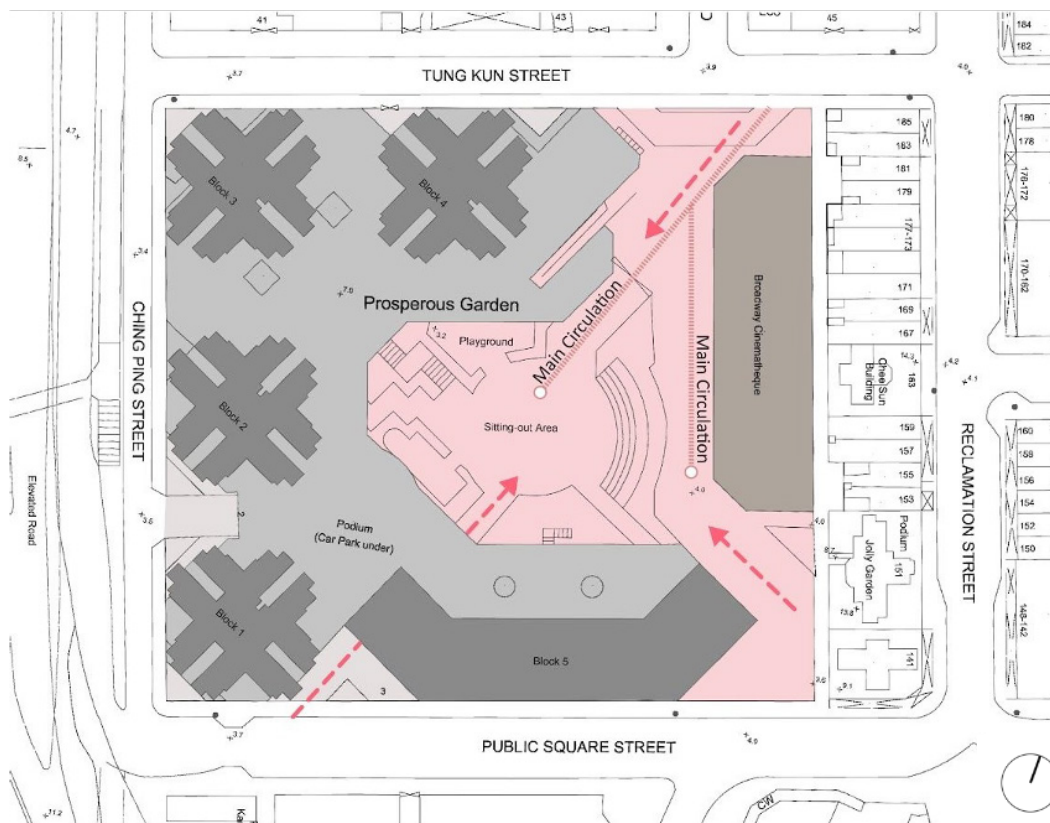
⁶ Civic Exchange Open Space Opinion Survey 2018, p. 82

⁷ Civic Exchange Open Space Opinion Survey 2018, p. 44

3.0 APPENDIX

Project Site Information

Site Overview



- 1) Prosperous Garden is a **privately-owned public space (POPS)** managed by Hong Kong Housing Society (HKHS).
- 2) With an area of approximately 5,850sqm (shaded in pink), the main garden is located on G/F while the public space is outside the retail and commercial compound.
- 3) It was originally designed 32 years ago and underwent several design changes. The former fountain at the centre of the main garden (see 1987 Master Layout Plan) is now a sitting-out area, forming the main circulation route for ingress and egress of emergency vehicles. Elderly exercise machines were added in 2000s⁸.
- 4) The main garden was designed for passive recreational use⁹. The surrounding commercial facilities were introduced to subsidise the management and maintenance of the open space.

⁸ HKHS, 2019

⁹ Section 16 Application no. A/K2/37 (06/03/1987)

- 5) The main garden is open from 06:00 - 23:00, while the public space outside the main garden is open to the public 24/7.
- 6) It is a **thoroughfare with three access points**. The entrance at Public Square Street precludes **the public** from entering the site. The entrances at Tung Kun Street and Reclamation Street are more open and may introduce **non-residential, non-regular users** to the site.

User Behaviours



3.0 APPENDIX



User behaviours in the main garden tend to be guided by the spatial setting. It can provide usage-based clear space zoning but reduce potential intergenerational interactions:

- Young children tend to stay within the children's play area and the piazza area.
- Older children and teenagers tend to congregate in the piazza area and initiate their own activities.
- Adults tend to gather at the tiered outdoor theatre and engage in passive activities, especially sitting and phone browsing.
- Elderlies tend to stay within the exercise zone. Seating underneath the podium are also popular for those that would like to be at outdoors but protected from elements (left picture).
- The sizeable piazza attracts the ethnic minority youth to play cricket, at times generating complaints from residents¹⁰.

¹⁰ According to observations from local NGOs

Opportunities and Constraints

Opportunities	Constraints
<ul style="list-style-type: none"> - A park design prototype for ageing housing estates to promote <u>ageing in place</u>. - User-centric park design can <u>balance user behaviour and management concerns</u>. - Hardware design and soft programmes can be introduced to foster inclusivity and <u>cross-cultural and intergenerational interactions</u>. - Elderly Resource Centre, kindergarten, school, teen centre and elderly day care centre gather <u>regular streams of intergenerational users</u>. - This is potential to upgrade the public space to <u>enhance sensory comfort</u> and introduce facilities to make it more <u>age-friendly</u>, especially for those that may have other disabilities, e.g. tactile paving.¹¹ - This is potential to <u>increase visibility of Elderly Resource Centre</u> to the public by improving lighting, wayfinding and walkability. 	<ul style="list-style-type: none"> - The Prosperous Garden piazza was designed for passive recreation. Hard and soft programmes introduced must be mindful of this key identity to avoid <u>changing the character of the place</u>. - The circulation route <u>(Emergency Vehicular Access)</u> should be kept clear, the introduced activities and facilities must be movable.



¹¹ 「私人發展公共空間」審計結果出爐!(拓展公共空間, 2018)

3.0 APPENDIX

Comments and Suggestions Gathered from Initial Consultation with HKHS and NGOs in the Vicinity

- 1** There is a relatively **high concentration** of elderlies within a single housing estate (157 elderly flats in Prosperous Garden occupy 10% of the flats), encouraging HKHS to actively promote **ageing in place**.
- 2** The landscaped garden is popular among residents and local stakeholders, increasing the possibility of intergenerational play in the area.
- 3** **Frequent maintenance is required** for facilities and rubber tiles in the children's playground and the elderly exercise corner due to frequent usage and/or misuse.
- 4** **Homelessness, poverty and social issues** have implications on the site design and management:
 - Customers and ethnic minority groups frequently use the public space, especially during weekends.
 - Noise complaints – especially about noises from the commercial and retail compound at night - are filed by residents living above.
 - Some homeless people stay in the nearby round-the-clock McDonald's.
 - Police assistance is sometimes required in handling crime or anti-social behaviours.
- 5** Broadway Cinematheque and its cafe/bookstore bring in **irregular, non-residential users**. Elderly Resource Centre is popular among visitors and **registered members for health checking**.



Considerations on Intergenerational Play Space

Below are the suggested design criteria for an age-friendly open space, summarised by two researches conducted by an NGO and an academic institute:

Domain	Suggested design criteria	Elements for age-friendly outdoor spaces and buildings by Jockey Club Age-Friendly City Research (2017)	Study on social needs of elderlies in public space in urban renewal by The Department of Building and Real Estate, PolyU (2015) ¹²
Physical Setting	Clean and pleasant environment	✓	✓
	Access to nature and landscape	✓	✓
	Outdoor seating/ urban furniture/ spatial setting	✓	✓
	Secure environment and sense of security	✓	✓
	Relationship to culture and history (heritage, sense of place, importance of local identity)		✓
	Sufficient maintenance and management		✓
	Adequate lighting		✓
Community Features	Community facilities, services and public toilets	✓	✓
	Multi-functionality (permanent and occasional functions reserved for the area)		✓

¹² Esther Yung, Sheila Conejos, Edwin Chan. 2015. *Social needs of the elderly and active ageing in public open spaces in urban renewal*

3.0 APPENDIX

Domain	Suggested design criteria	Elements for age-friendly outdoor spaces and buildings by Jockey Club Age-friendly City Research (2017)	Study on social needs of elderlies in public space in urban renewal by The Department of Building and Real Estate, PolyU (2015) ¹²
Transport, Directions and Mobility	Walkways and cycle paths	✓	✓
	Pavements and roads; safe pedestrian crossings	✓	✓
	Accessibility	✓	✓
	Access to public transportation and infrastructure		✓
	Unconstrained legibility (wayfinding, understanding and legibility of directions)		✓
	Mobility (ease of activities, convenience, disabled facilities, comfortable movement)		✓
Personal and Community Life	Psychological health (personal esteem, autonomy and empowerment)		✓
	Social participation (involvement in site planning and management)		✓
	Social inclusion		✓
	Social contact and network; the need to talk to each other		✓
	Social and physical activities		✓
	Conflict of use (different uses of space per day and time of day, better management)		✓

Reference Photos

User behaviours at Cherry Street Park



- Outdoor fitness facilities at Cherry Street Park

- Outdoor fitness facilities (designed and produced by a retired engineer and SARS recoveree) at Bishop Hill, Sham Shui Po

3.0 APPENDIX

Intergenerational and multi-sensory play facilities and usage observations at Tuen Mun Park



Other open space usage in Tuen Mun Park and Man Ming Lane Resting Area



Singapore's first intergenerational playground and childcare centre in a nursing home - St Joseph's Home



3.0 APPENDIX

Overseas public space environment
(Traditional climbing bars and swing for adults)



Multipurpose bench and bike rack (left) / Customisable floor lighting (right)

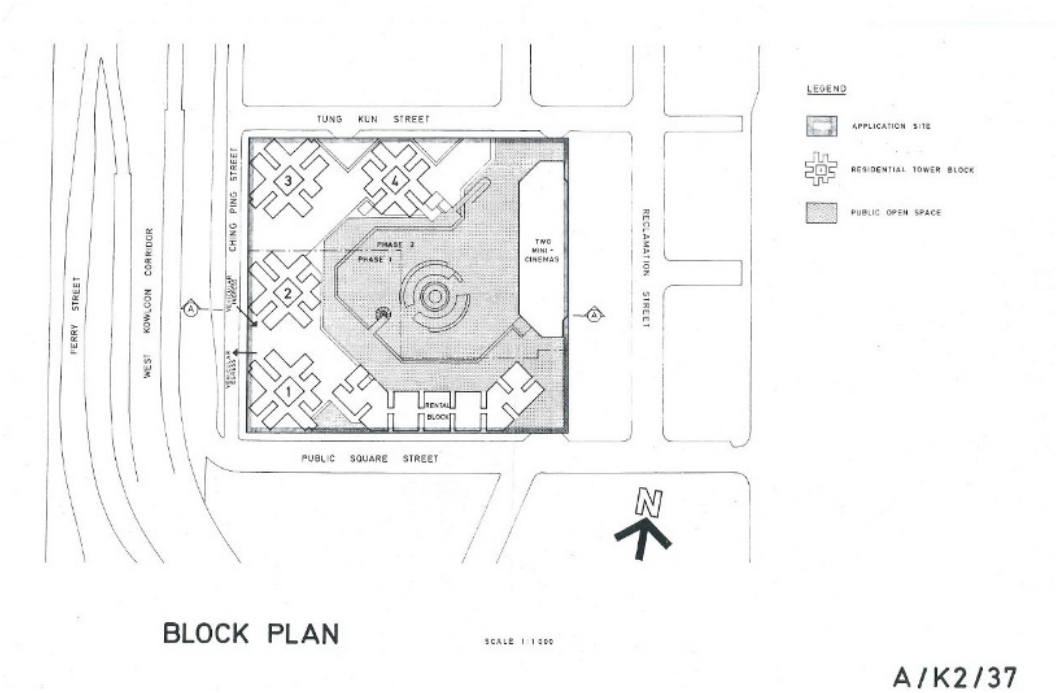
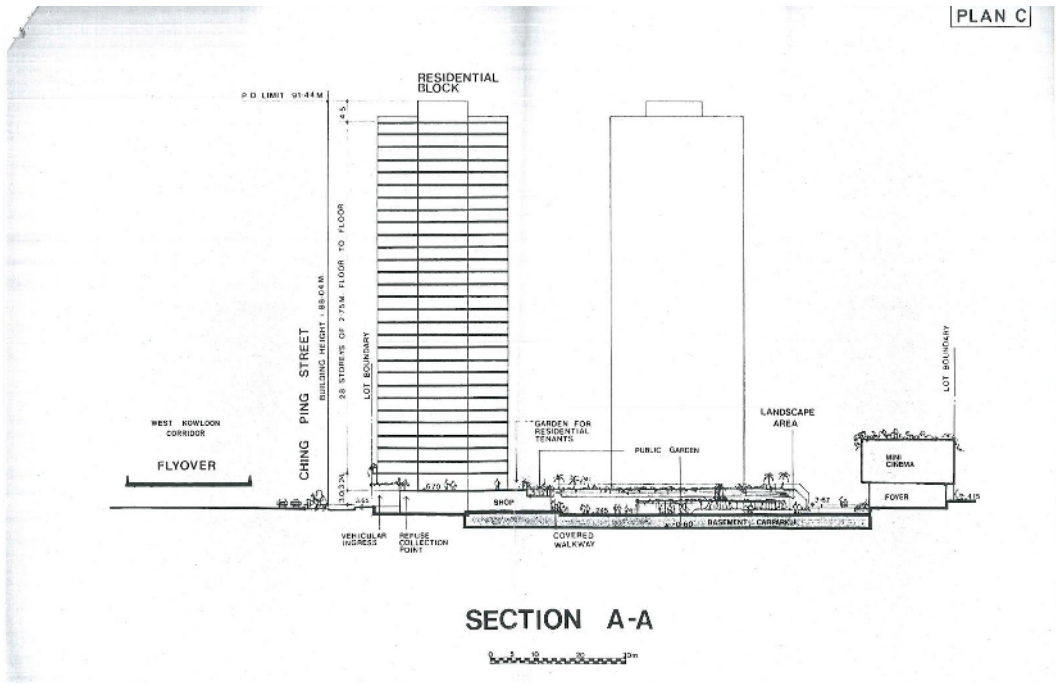


Related News and Article Links

- 1) [明周文化：特事特辦 屯門共融遊樂場實驗](#)
- 2) [【無處玩樂】小朋友視察本港遊樂場 細數遊樂場七宗罪](#)
- 3) [50年前港有超前衛遊樂場 美建築師：香港比美國更開放！](#)
- 4) [未來城市：新世代遊樂場 好玩不要「罐頭」](#)
- 5) [【屋邨遊樂場·天價維修】瀝源邨健體設施 齣換說明板索價20萬](#)
- 6) [Singapore's first inter-generational playground, childcare centre in a nursing home launched](#)

3.0 APPENDIX

1987 Master Layout Plan



Surrounding Establishment of Prosperous Garden

- The site is within 5-minute walk from Yau Ma Tei MTR Station.
- Cultural and entertainment venues surrounding the site generate irregular visits of outsiders in the neighbourhood.
- The site, adjacent to Nathan Road, is well-connected to different districts via MTR and bus routes.



A. Fruit Market

B. Kei To Primary School

C. Housing Society
Elderly Resources Centre

D. Broadway Cinematheque

E. Jade Market

F. Yau Ma Tei Theatre

G. Red Brick House

H. Tin Hau Temple

I. Yau Ma Tei Public Library

J. Temple Street

3.0 APPENDIX

Transportation Information

Road Network

The location, adjacent to the turning point of West Kowloon Corridor, is well-connected via different modes of public transport.

Public Transportation and Accessibility

Table 1 List of Minibuses serving Yau Ma Tei¹³

Minibus Route	Destination	Frequency	Fare (HK\$)
74	Kowloon Station PTI	Every 6-8 minutes	7
74S	Kowloon Station PTI	Every 12-15 minutes	7
3	Hong Kong Station PTI	Every 6-10 minutes	6.6

Table 2 List of Buses serving Yau Ma Tei

Bus Route	Destination	Frequency	Fare (HK\$)
30X	Tsuen Wan	Every 15-20 minutes	8.9
81	Sha Tin	Every 10-12 minutes	6.8
N118	Siu Sai Wan	Every 15-20 minutes	13.4
10	Choi Hung	Every 15-20 minutes	4.9
6C	Mei Foo	Every 10-12 minutes	5.8
6F	Sham Shui Po	Every 20-25 minutes	4.9
118	Siu Sai Wan	Every 15-20 minutes	7.4

¹³ [Minibus Route Directory](#)

APPENDIX 3.2 | Suggested Disciplines

Knowledge and skills of the following fields may improve the applicability of the design proposal:

Field of expertise :		
1	Spatial Design	E.g. Playscape design, landscape and architectural design, wayfinding, soft and hard landscape upgrading works
2	Product and Industrial Design	E.g. Play facilities, fitness equipment, seating area, public art and installations
3	Play and/or Fitness Equipment Design and Safety Assessment	
4	Smart Ageing and Assistive Technology	
5	Smart City and Internet of Things (IoT) Knowledge	E.g. Cloud data storage, mobile apps, GIS, VR, AR, sensor and data analytics
6	Rehabilitation Science	E.g. Physiotherapy, occupational therapy, biomedical engineering, chronic disease management, gerontology, dementia, children development, SEN needs
7	Health and Well-being Management	E.g. Nursing, medicine, sports science, elderly care, caregiving, psychology, mental health and well-being enhancement and healthy living
8	Community Engagement	E.g. Stakeholder consultation and social media management
9	Community Building and Placemaking	E.g. Social work, event/ programme design, social design, communications design
10	Venue Management	E.g. Property management and environmental management

APPENDIX 3.3 | Scale Reference for Physical Models or Drawings

Scale	Model Content
1:10	Outdoor furniture
1:50	Detailed site plans
1:100	Building plans / layouts
1:500	Building plans / site plans
1:1000	Urban scale for site or location plans
1:1250	Site plans
1:2500	Site plans / city maps

APPENDIX 3.4 | Registration Form - University Category (A)

Name	(Chinese)
	(English)
Name of University/ Institution	
Student ID Number	
Faculty / Discipline	
Community Experience	
Previous Awards, Prizes, Scholarships	
Participation in Services to Profession and the Community	
<input type="checkbox"/> I am the point of contact (POC) of the project team.	

Note:

1. Please append extra sheets if additional spaces are required.
2. Please submit a registration form for each team member.

APPENDIX 3.4 | Registration Form - Professional Category (B)

Name	(Chinese)
	(English)
Professional Affiliation	
Membership Number	
Education	
Professional Qualifications	
Work Experience	
Previous Awards, Prizes, Scholarships	
Participation in Services to Profession and the Community	
<input type="checkbox"/> I am the point of contact (POC) of the project team.	

Note:
1. Please append extra sheets if additional spaces are required.
2. Please submit a registration form for each team member.

APPENDIX 3.5 | Conceptual Design Statement

Project Title: _____

A description of not more than **800 words** in English or Chinese. Simple illustrations of ideas are optional:

This image shows a full page of blank handwriting practice paper. It features approximately 28 evenly spaced horizontal red lines across the entire page, providing a guide for letter height and placement. The background is plain white, and there are no margins, text, or other markings present.

APPENDIX 3.6 | Template of Team Portfolio

Title of Project

Brief Description: (Font size 12)

Completion Year:

Location:

Awards:

Others:

Image / Rendering

Image / Rendering

Image / Rendering

Image / Rendering

Image / Rendering

Image / Rendering

* [Website link](#) to download InDesign and Word Format.

APPENDIX 3.7 | Declaration Form

- 1) I/We declare that we meet the entry requirements and I/we fully understand that all the terms and conditions in the Competition Brief for the “Intergenerational Play Space Design Competition | HKHS Prosperous Garden” and I/we hereby agree to abide by such terms and conditions.
- 2) In accordance with the “Admission to the Competition” and “Disqualification” sections of the Competition Documents:
 - a) I/We declare that I/we do not have any member of JCDISI, HKHS, Competition Secretariat, nor any of its associates or employee, nor any person who has been concerned with the preparation or organisations of the competition, participated or assisted us to complete in the competition.
 - b) I/We declare that I/we do not have any member of the jury taking part either directly or indirectly or be entrusted either directly or indirectly with a commission connected with the carrying out of the Design Proposal of the competition.
- 3) I/We declare that our Design Proposal is our original work and I/we own the full Intellectual Property Rights subsisting in the Design Proposal without infringing the Intellectual Property Rights of any party.
- 4) I/We shall undertake full responsibility for our participation in the Design Competition and to indemnify JCDISI and HKHS for any loss as a result of any breach of the law or the terms and conditions of the Design Competition or this Declaration.
- 5) I/We declare that I/we shall grant a royalty-free, irrevocable, non-exclusive, worldwide, perpetual, sub licensable and transferable licence to JCDISI and HKHS, its authorised users, assigns and successor-in-title to take photos of, reproduce, use, keep records of, release, display, modify, translate and distribute any information in respect of the Design Proposals including but not limited to the text, moquette and image for documentation, public consultation, exhibition, educational and publicity purposes through various forms and channels including the internet.

APPENDIX 3.7 | Declaration Form

Signed and Delivered by:

Name of Participant(s)	Signature of Participant(s)
(1)	
(2)	
(3)	
(4)	
(5)	
(6)	
Date:	

Note:
All members of the participating team must sign this declaration form.

APPENDIX 3.8 | Checklist for Submission

The submission for **Stage 1** shall include the following items in PDF format:

Stage 1 - University Category

Required Items	Check " ✓ "
- A maximum of two (2) pages of "A4" Registration Form (A) from each participating member (Appendix 3.4)	
- Conceptual Design Statement completed in English or Chinese (Appendix 3.5)	
- A maximum of three (3) pages of "A3" Team Portfolio (in landscape format) with the font of size 12 (Appendix 3.6)	
- Declaration Form signed by all participating team members (Appendix 3.7)	

Deadline: 12:00 noon, 30th June 2020 (Hong Kong time).
Incomplete submissions shall not be considered.

APPENDIX 3.8 | Checklist for Submission

The submission for **Stage 1** shall include the following items in PDF format:

Stage 1 - Professional Category

Required Items	Check " ✓ "
- A maximum of two (2) pages of "A4" Registration Form (B) from each participating member (Appendix 3.4)	
- Conceptual Design Statement completed in English or Chinese (Appendix 3.5)	
- A maximum of three (3) pages of "A3" Team Portfolio (in landscape format) with the font of size 12 (Appendix 3.6)	
- Declaration Form signed by all participating team members (Appendix 3.7)	

Deadline: 12:00 noon, 30th June 2020 (Hong Kong time).
Incomplete submissions shall not be considered.

APPENDIX 3.8 | Checklist for Submission

Entry code:

The submission of **Stage 2** shall include the following items in hard copy:

Stage 2 - University Category

Required Items		Check " ✓ "
Hardcopy	1. A maximum of two (2) pages of "A2" Panels (in landscape or portrait format) with the board sequence labelled at the back of each board (1 of 2 and 2 of 2) 2. A maximum of ten (10) pages "A3" Detail Design Proposal, including text, high quality photos, illustrations or renderings 3. One (1) page "A4" Tentative Budget Breakdown 4. Completed Checklist for Submission	
A CD/ DVD/ Thumb drive contains	PDF of deliverable items 1,2,3 and 4	
Supporting design items but not limited to the followings:		
- Physical model (with entry code labelled at the back) the size of the model referencing in (Appendix 3.3) (max. dimension: 500mmW x 500mmL x 300mmH)		
- Virtual reality		
- Video		

Deadline: 18:00, 9th October 2020 (Hong Kong time).
 Incomplete submissions shall not be considered.

APPENDIX 3.8 | Checklist for Submission

Entry code:

The submission of **Stage 2** shall include the following items in hard copy:

Stage 2 - Professional Category

Required Items		Check " ✓ "
Hardcopy	<ol style="list-style-type: none"> 1. A maximum of two (2) pages of "A2" Panels (in landscape or portrait format) with the board sequence labelled at the back of each board (1 of 2 and 2 of 2) 2. A maximum of ten (10) pages "A3" Detail Design Proposal, including text, high quality photos, illustrations or renderings 3. One (1) page "A4" Tentative Budget Breakdown 4. Completed Checklist for Submission 5. Physical model (with entry code labelled at the back) the size of the model referencing in (Appendix 3.3) (max. dimension: 500mmW x 500mmL x 300mmH) 	
A CD/ DVD/ Thumb drive contains	PDF of deliverable items 1,2,3 and 4	
Supporting design items but not limited to the followings:		
- Virtual reality		
- Video		

Deadline: 18:00, 9th October 2020 (Hong Kong time).
Incomplete submissions shall not be considered.

4.0

TERMS AND CONDITIONS

- 4.1 Disqualification
- 4.2 Power of Waiver
- 4.3 Personal Data Collection
- 4.4 Prizes and Awards
- 4.5 Exhibition and Publicity
- 4.6 Safekeeping of Submission Materials
- 4.7 General Remarks

4.1 Disqualification

Submitted entries may be disqualified for any of, but not limited to, the following reasons:

- 4.1.1) If the registered teams in Professional Category fail to provide supporting documents of their professional recognition;
- 4.1.2) If the parties are likely to be in conflict of interest, including JCDISI, HKHS and the Competition Secretariat and members of the Jury Panel closely associated with the preparation and/or conduct of the Competition;
- 4.1.3) If any of the conditions or specific instructions are disregarded;
- 4.1.4) If the submission is received after the closing time and date stipulated; or
- 4.1.5) If a participant/team discloses their identity, or improperly attempts to influence the Jury Panel's decision.

4.2 Power of Waiver

The Jury Panel reserves the power to waive or to vary any of the conditions in circumstances where, in its sole discretion, the best interest of the selection exercise would justify the course of action. The decision of the Jury Panel shall be final, and the Jury Panel is not obliged whatsoever to give any reasons for the rejection of any submission.

4.3 Personal Data Collection

- 4.3.1) According to the Personal Data (Privacy) Ordinance, the personal data provided by the participants are mainly for carrying out the Competition.
- 4.3.2) By submitting the required deliverables in Stage 1 and Stage 2, participants agree that JCDISI and HKHS shall keep the personal data provided. JCDISI and HKHS shall use such data for this Competition and promotion of other future programmes by JCDISI and HKHS.
- 4.3.3) Taking Photographs and/or Videos during Events
JCDISI and HKHS may take photographs/ video recording during this event and use such images in publicity or marketing activities. The recorded images will be handled by JCDISI according to the prevailing policy of PolyU, for policy details please refer to: https://www.polyu.edu.hk/web/en/privacy_policy_statement/

4.3.4) Purpose of Collection

The personal data provided by you to JCDISI will be collected, retained, processed, used and transferred (within or outside of Hong Kong) for handling and following up your registration requests or enquiries and matters related hereto.

4.4 Prizes and Awards

4.4.1) Prizes and awards in the **University Category** will include:

- Certificates of Merit to all participating teams
- Certificates to the Most-Voted team in Public Voting
- HK\$10,000, HK\$7,000 and HK\$3,000 monetary prizes for the winning teams

4.4.2) Prizes and awards in the **Professional Category** will include:

- Certificates of Merit to all participating teams
- Certificates to the Most-Voted team in Public Voting
- HK\$30,000, HK\$20,000 and HK\$10,000 monetary prizes for the winning teams

4.4.3) The prize does not include acquiring the designer's intellectual property right. The names of all winners will be placed on the official website to allow businesses to contact them for future designer projects. It is not intended that the winning design be reproduced by the organizer.

4.5 Exhibition and Publicity

- 4.5.1) JCDisI and HKHS are entitled to display or exhibit on any date and in any venue the entries or any part thereof, and promote issues, copy or publish any media, website, publication, the entries or any part thereof.
- 4.5.2) The winning teams will be given a set amount to develop exhibits, such as physical models and panels. The procedure of reimbursement shall be informed by the Competition Secretariat.
- 4.5.3) JCDisI and HKHS reserve the right to decide on the format and manner in displaying the submitted proposals and/or the proposed report, including frequency and quantity of display items, choice of categories and scope, whole or part of the provided texts and images of the design proposals and/or supporting design items etc. JCDisI and HKHS are not obliged to exhibit or publicise any or all the received proposals, and reserve the right to select proposals and proposed design for exhibition at any time and in any venue and location that it may deem appropriate at its sole discretion, including the discretion to feature or not to feature any particular proposals submitted.

4.6 Safekeeping of Submission Materials

- 4.6.1) The Competition Secretariat Office will take reasonable measures for the safekeeping of the participants' submitted entries but shall not be held responsible for any damage or loss however caused.
- 4.6.2) All successfully submitted entries will not be returned.

4.7 General Remarks

- 4.7.1) JCDisI, HKHS or the Jury Panel is not obliged to accept any of the Participants' submissions, and reserves the right to reject any or all submissions.
- 4.7.2) JCDisI and HKHS reserve the right to reject and deprive the title of any Shortlisted, Selected Participants and Design Proposals when deemed appropriate.
- 4.7.3) JCDisI's and HKHS's decisions regarding all aspects of the project shall be final and binding on all parties concerned.
- 4.7.4) JCDisI and HKHS shall not be held liable to compensate any participants for any rejected, disqualified, unsuccessful or title-deprived proposals.

- 4.7.5) Each team can only submit one Design Proposal in this Competition. Only the first submission shall be considered by the Jury Panel in the event of multiple submissions from the same Participant.
- 4.7.6) The Terms and Conditions of the Competition and other arrangements are subject to change at JCDisI's and HKHS's discretion. While the Organisers shall take reasonable actions to notify participants of any such changes, the Participants should keep a close eye on the official Facebook page of the Competition [[@pg.designcomp](#)] and keep themselves updated about any information or changes related to the Competition Brief. All matters, information or changes as announced on the Competition Facebook page concerning the competition shall be deemed confirmed and binding on all participants.
- 4.7.7) Upon the submission of the Design Proposal, the Participant acknowledges that he or she understands and agrees to be bound by all the terms and conditions in this Competition Brief and those prevailing throughout the competition.
- 4.7.8) JCDisI, HKHS, and the Jury Panel shall not be held responsible or liable for any erroneous, damaged, destroyed, lost, late, incomplete, illegible and misdirected proposals, or any damage or loss arising from, connected with, or relating to the competition, the submission of proposals, participation in the competition, regardless of the cause or any fault by JCDisI, HKHS, or the Jury Panel.
- 4.7.9) JCDisI and HKHS may at its discretion cancel, modify or suspend the Competition. The participants shall not be entitled to any compensation as the consequence of such cancellation, modification or suspension.

Organiser



THE HONG KONG
POLYTECHNIC UNIVERSITY
香港理工大學



Funded by



香港賽馬會慈善信託基金
The Hong Kong Jockey Club Charities Trust

同心 同步 同進 RIDING HIGH TOGETHER

Action Project Co-Organiser



HONG KONG
HOUSING SOCIETY
香港房屋協會

Competition Secretariat

onebite

