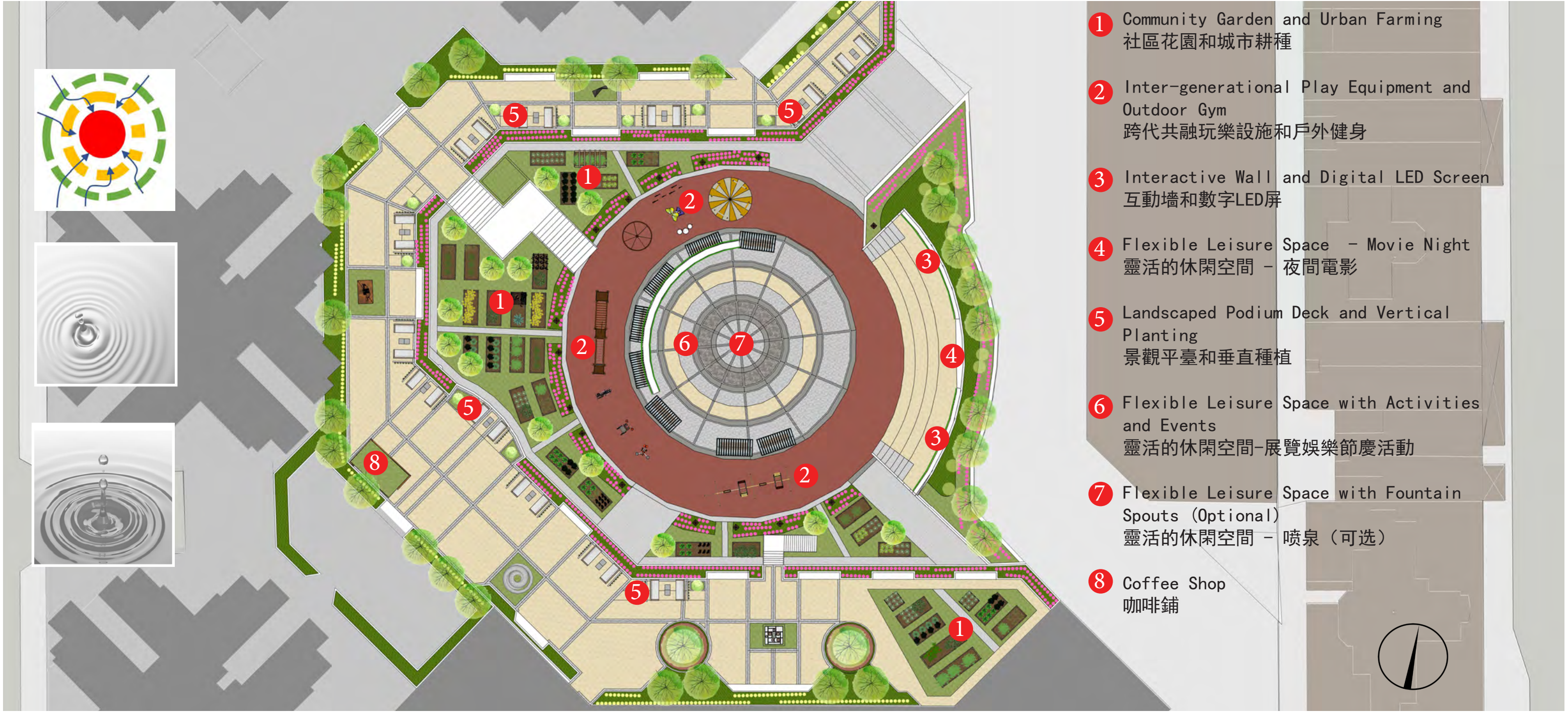
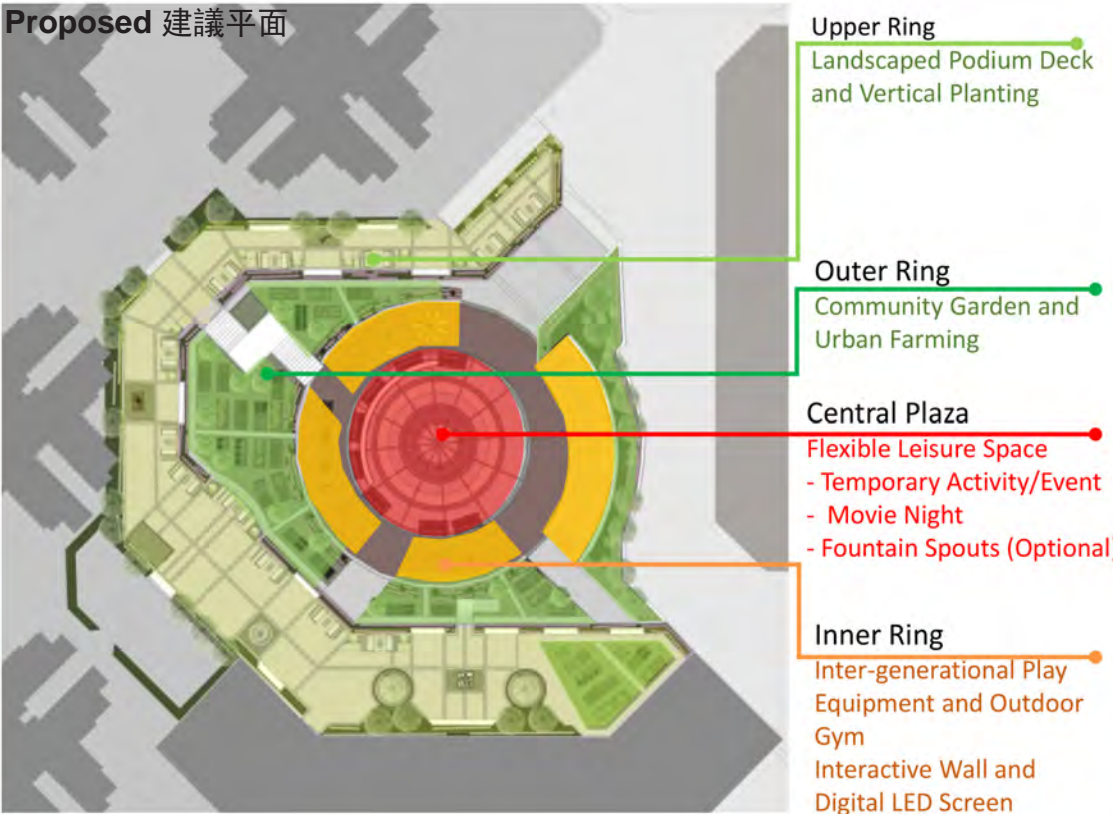
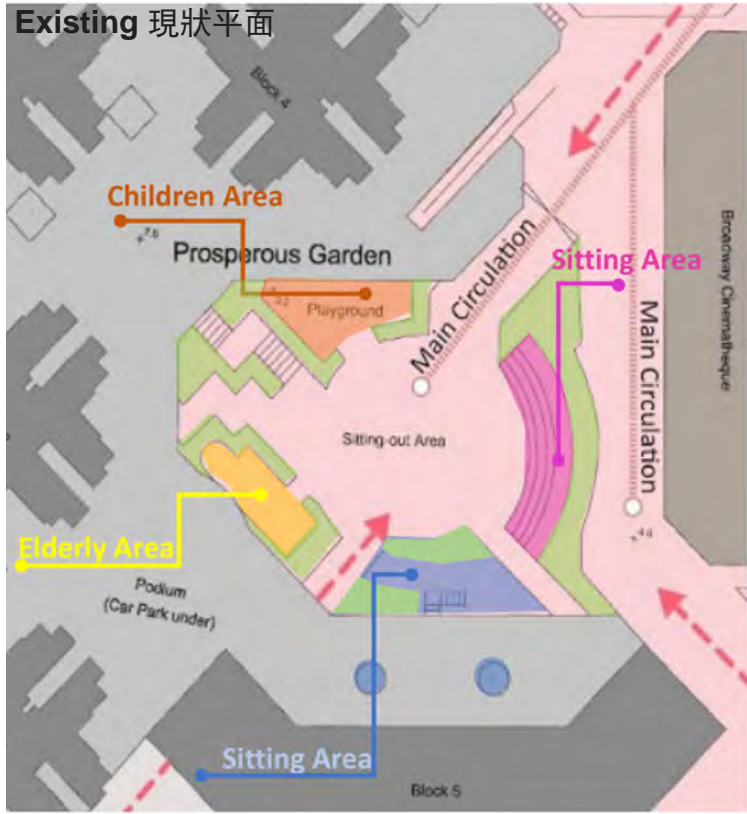


# Ripple – Theater of Life 漣漪輕漾 – 人生劇場



## Concept 概念



Our design concept "Ripple – A theatre of Life", aims to bring energy, vibrancy and life into Prosperous Garden, resembling the effect of a water droplet into a calm lake and a soothing space in the community. The plaza will be defined by four zones: the central plaza, the inner ring, the outer ring and the upper ring, each zone with different level and type of activity as shown in the graphics package attached. We aim to involve all walks of life to engage with each other in the public space, nurturing an intergenerational, socially inclusive and equitable open space with universal access for all. By developing a spatially well integrated and interactive open space, a healthy, active and sustainable lifestyle will be promoted within the Prosperous Garden community. Children and elderly can play and interact with each other in the play space with sustainable and smart landscaped open space. Prosperous Garden would then be transformed into a multi-purpose flexible inter-generational leisure space with various community activities for residents of all ages to enjoy.

Our design will help integrate the Prosperous Garden open space in a cohesive manner by promoting inter-generational activity bringing together residents of all ages to be drawn towards the Central Plaza and Community Garden. Through safe and easy-to-maintain intergenerational play equipment with features that encourage physical exercise for the elderly as well and urban farming the redesigned Prosperous Garden will offer more opportunities for intergenerational interactions. This will help both physical as well as mental health and well-being of all within a pleasant well-designed landscaped environment through various features such as inter-generational play equipment, interactive wall, Digital LED Screen and urban farming encourages participation, education and awareness within the community

Our redesign of Prosperous Garden helps promote social cohesiveness with a network of a meaningful hierarchy of active and passive open spaces for the residents of all ages to enjoy. The elderly residents as well as the children and youngsters will be encouraged to come together to fulfil their needs and aspirations on a daily, weekly, seasonal and all year around for a high quality living promoting an active and healthy lifestyle. Proper management, maintenance and building a strong social network with be important to help strengthen social cohesion among residents and create a sense of community, ownership and belonging within a pleasant landscaped environment. Prosperous Garden with its universal access and increased inter-generational interaction and community participation can become a model that could inspire the transformation and creation of more intergenerational play spaces in Hong Kong.

## Inter-generational Play Equipment and Outdoor Gym 跨代共融玩樂設施和戶外健身



The inner ring will promote active and healthy lifestyle with a series of intergenerational play and outdoor gym equipment suitable for all ages, encouraging intergenerational active interaction. Intergenerational play equipment is designed to allow elderly and children to play together in a cooperative manner. Sensors could also be installed in the play equipment to facilitate the proper use of the play equipment by the residents. Using a soft paving material in this area helps safer interaction for both elderly and the children. Along the playground, linear flower beds in the community garden form a more colorful and aesthetically pleasing environment for residents to enjoy.

## Community Garden and Urban Farming 社區花園和城市耕種



The outer ring will be transformed into a community garden with urban farming to create a sense of ownership, which allows local community to participate in farming, where they can come together daily to plant, maintain and grow organic vegetables. Urban farming workshops can be organized for residents to learn and share healthy life experiences and create an intergenerational platform for elderly and children to participate together. When farming activity happens on the ground floor, the residents can also see from the podium level or their windows in their homes above. The community garden will bring new identity to Prosperous Garden and together with the Central Plaza become an attractive landmark, not only for the residents but also for their friends from neighboring areas.





# Ripple – Theater of Life 漣漪輕漾 – 人生劇場



Interactive Wall and Digital LED Screen 互動牆和數字 LED 屏



The existing blank wall on the east side of the plaza will be raised and transformed into an interactive wall with vertical greening above. A series of tiles with different colours are installed on both sides of the wall that allows people to touch and play and create new patterns. During the day people can be engaged to play by flipping the tiles on the wall to create different patterns or messages. In the middle of the wall, a large digital LED screen acts as a knowledge board, to display sustainability metrics information about the energy use, waste recycling and climate statistics etc in Prosperous Garden.

Landscaped Podium Deck and Vertical Planting 景觀平臺和垂直種植



A landscaped podium with flowers beds along the edge creates a calm and peaceful area for the residents to sit and relax while looking at the active zones below. Residents can enjoy the space with vertical screening of planters with "Harita" a specifically designed sustainable landscape pod feature offering aesthetic value and privacy for every seating area. A landscaped area connects the outer edge landscape green area of the podium to the inner edge of the podium adorned with public art sculpture. A coffee shop could be provided on the landscape podium near the seating area with a green roof. On the upper level, some area for urban farming is also included within the podium in a spacious corner. This area is to provide the residents a greener and comfortable outdoor space to gather and interact with each other even at the upper level.

Flexible Leisure Space – Movie Night 靈活的休閒空間 – 夜間電影



The screen can also showcase films during weekends, festivals or other occasions, bringing an outdoor cinema experience to the residents. This would bring all ages together and create a strong sense of place and community within Prosperous Garden. On a daily basis, the screen could highlight some information regarding the upcoming events organized in Prosperous Garden, encouraging more participation of the residents and friends from nearby communities.

Flexible Leisure Space with Fountain Spouts (Optional) 休閒空間 – 噴泉（可选）



A cluster of dry fountain spouts is optional proposed to be placed in the middle of the central plaza as an option, where the water will sprinkle at designated time intervals or turned off completely so that the space can be used normally as an event space for performances, fairs, exhibitions etc., as indicated above. The central dry fountain will have a cooling effect to help reduce the summer heat and will become a more attractive area and add to the ambience of the space. With the use of easy to dry pavement to improve quick surface drainage and use of non-slippery material will ensure the safety of the residents including the elderly. It also allows children to play with the water, providing them a chance to get in touch with nature which benefits their growth while having fun and the elderly can also sit and enjoy the drama unfold. The optional fountain spouts can be left to the residents and incorporated only if they decide that this feature should be included within their community.

