

JADEITE TERRACE 和諧瑤

Design Statement

Turning Prosperous Garden into a livable community with human-centered design. The active aging fitness facilities and inclusive children playground help strengthen social bond and create an age-friendly public space. Also, to follow sustainable development trends, distinctive sensory garden with biophilic planting strategies and green technology devices are the significant parts of the new Prosperous Garden. Besides, there would be landscape features around amphitheater to highlight the culture of Yau Ma Tei.

Design Concept

The old and valuable trees "Ficus Trees", which have stayed with residents of Prosperous Garden for decades of time, are chosen as the main conceptual clue to link up the unique district culture of the Yau Ma Tei into the new landscape design and emphasize the historical value and the social changes nearby with metaphors integrated into distinctive landscape design.

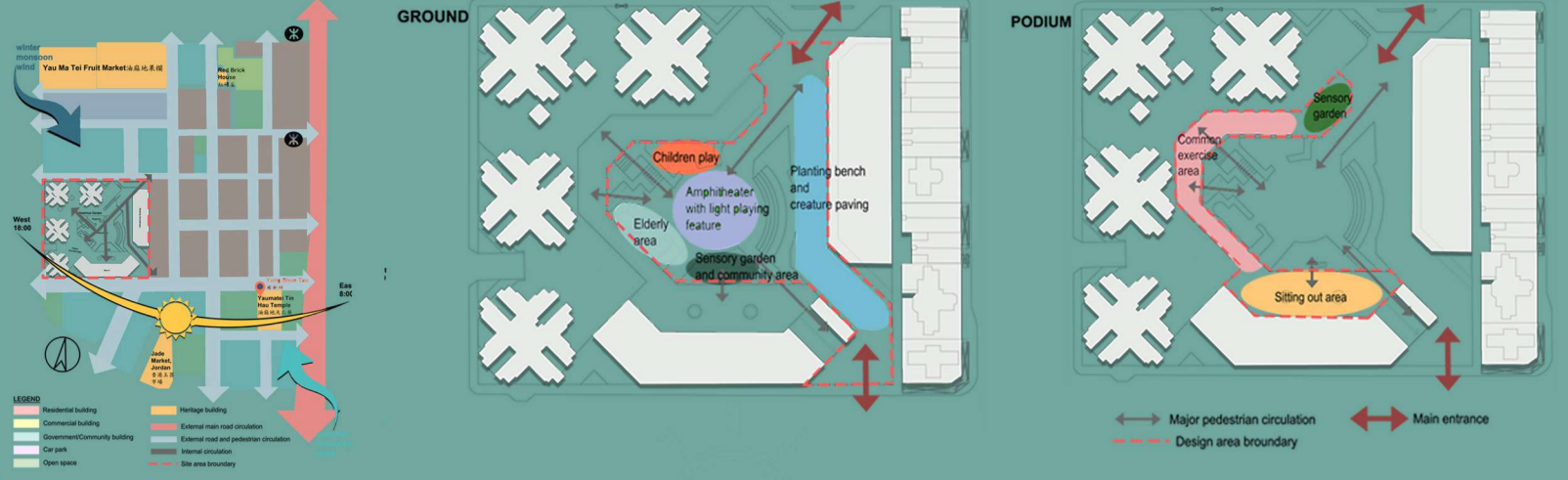
Strength

- A large public open space for residents to carry out recreational activities and festive events
- High accessibility
- Residents accept and capable with technology
- A quite, clean and comfortable environment

Weakness

- The planters are dilapidated and low variety of plant species
- Existing design lack of community characteristics and identities
- Inadequate shelters
- Lack of interactive play-facilities and age-friendly devices
- Mismatch design intention and users expectations

ANALYSIS



Opportunities

- Can incubate Yau Ma Tei culture and characteristics into the design
- Include more inter-generational and inclusive recreational
- Increase the number of plant
- Incubate health technology into the fitness area

Threats/Challenges

- Rise of usage rate during holidays that costs an extra maintenance expenditure
- Capacity of the park may overload during weekend

USER ACTIVITIES



SWOT ANALYSIS OF YAU MA TEI

Strength

- Several traditional cultural activities could be held nearby 傳統的文化活動可以在附近舉行
- Attract tourist 吸引遊客

Weakness

- Not enough open space and greenery 現存人均可計算休憩用地面積 (平方米) 不足

Opportunities

- Site of activities are very close to cultural activity spots 文化活動地點之間距離非常近
- Products from those local markets are with lower price and variety of choice 這些本地市場的產品價格較低, 選擇範圍也多種多樣

Threat

- Imbalance of human flow, i.e. more at southern side 人流不平衡, 多在南面
- Low amenity, as there are lots of old residential buildings without greenery or design 舒適度低, 因為有許多舊住宅建築, 比較少綠化或設計

YAU MA TEI COMMUNITY NETWORK

Tak Yu Restaurant

Traditional style Chinese restaurant in South Kowloon which is selling dim sums, side dishes and chinese cakes. In the past, many citizens came to there yum cha and chatted with friends and families. Tak Yu Restaurant has become a memorable and the most favourite place of Yau Ma Tei residents.

Mido Cafe

Traditional cha chaan teng at Yau Ma Tei, this restaurant is located at the three-stories tenement. Many residents gather at there to eat and chat with friends.

Prosperous Garden (Site area)

Prosperous Garden used to be the "Yau Ma Tei Six-Street" which had been a boisterous spot where fishermen got on and off their boats and ceremonies were held.

Tin Hau Temple

It was built in 1865, the fourth year of Tongzhi reign of the Qing dynasty. The Tin Hau Temple complex is the largest temple in Kowloon, with the main hall and Shing Wong shrine.

Yau Ma Tei Wholesale Fruit Market

It was established in 1913 and was listed as a third-class historical building in 1990 and later was re-listed as a second-class historical building in Hong Kong in 2009.

Yau Ma Tei Jade Market

Nearly 500 jade hawkers stalls in this only one wholesale and retail market of jades in Kowloon. And there are a few "letter writers" booths which the only eight remaining in Hong Kong.

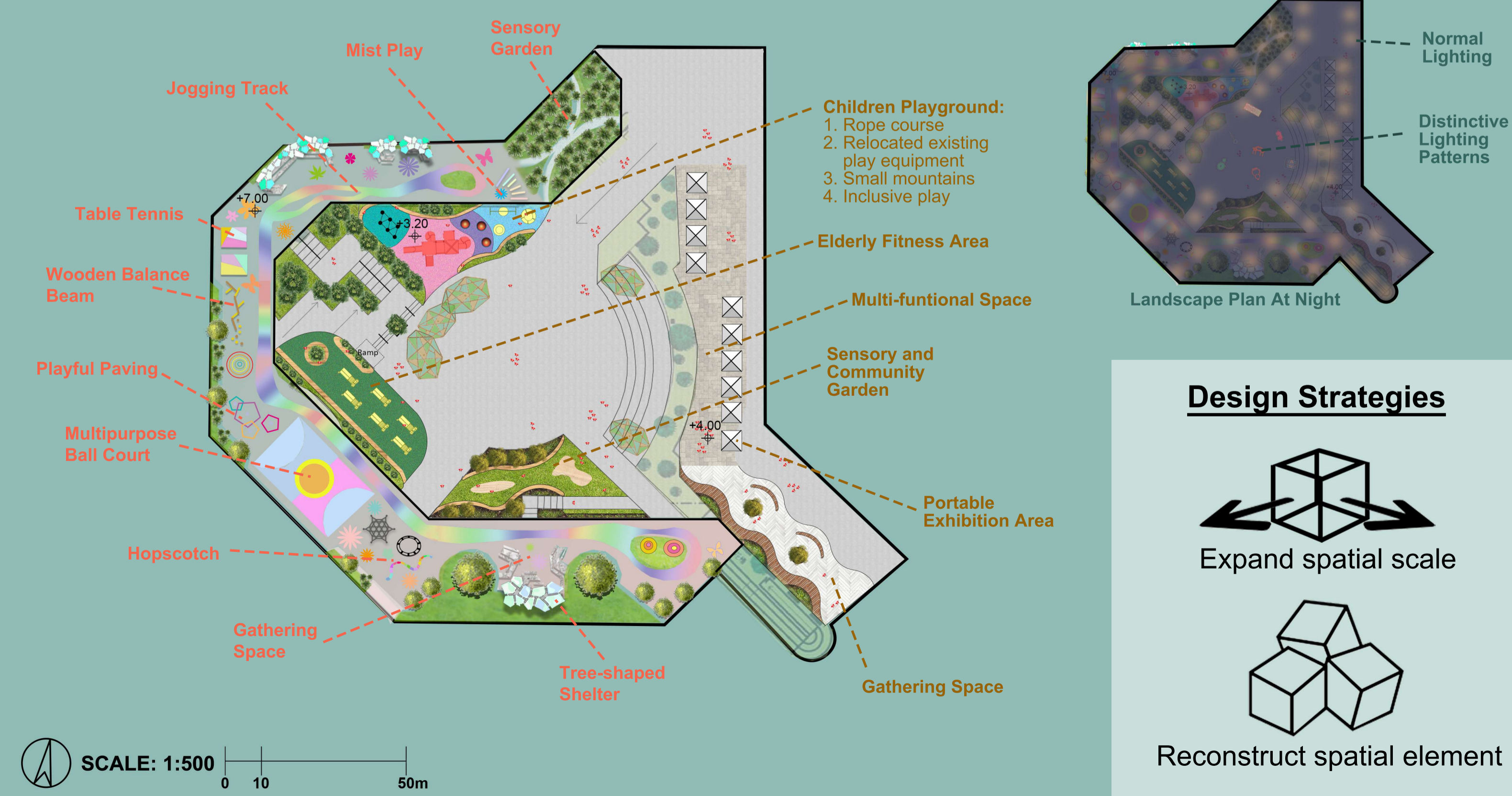
Temple Street

Famous as the "commoner's nightclub" of Hong Kong and lots of small stalls and hawkers, selling food, clothes and souvenirs discovered in this narrow street. Traditional music performance and fortune-tellers are found in Temple Street.

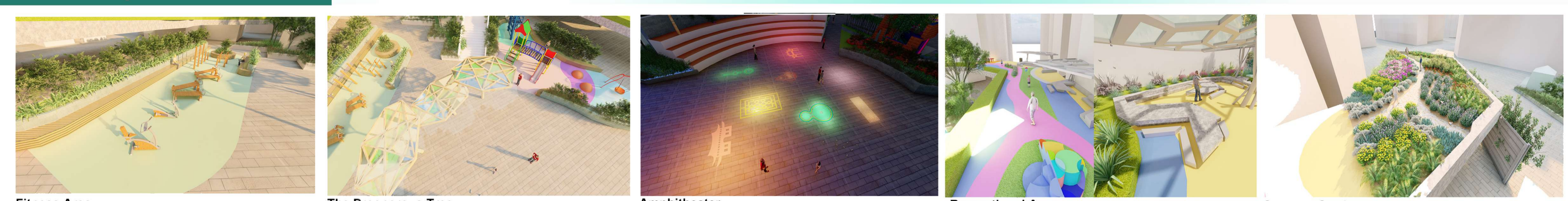
One-Eyed Dude Herbal Tea

It was formerly known as Chun Wo Tong Herbal Tea. Residents used to come there to buy herbal tea such as "five-flower tea".

LANDSCAPE MASTER PLAN



Landscape Sceneries



Fitness Area
The QR-Code on each fitness machine assists users in monitoring their health condition and synchronizes their amount of exercise with mobile devices. Also, the data collected from the machine will be transmitted to the cloud storage.

Sensory and community garden
The design of the benches is inspired by the artworks of local artists and to promote positive cross-cultural communication and anchor children with elderly. And the material used is recycled timber.

The Prosperous Tree
The shelter Prosperous Tree are inspired from the old and valuable tree that located near the Tin Hau Temple. Also, the shelter is installed a misting system, which helps to cool down the high temperature during summer time, provide a comfortable environment for the users.

Inclusive Children Playground
There is a variety of options available for all-aged users that they can enjoy the facilities according to preferences.

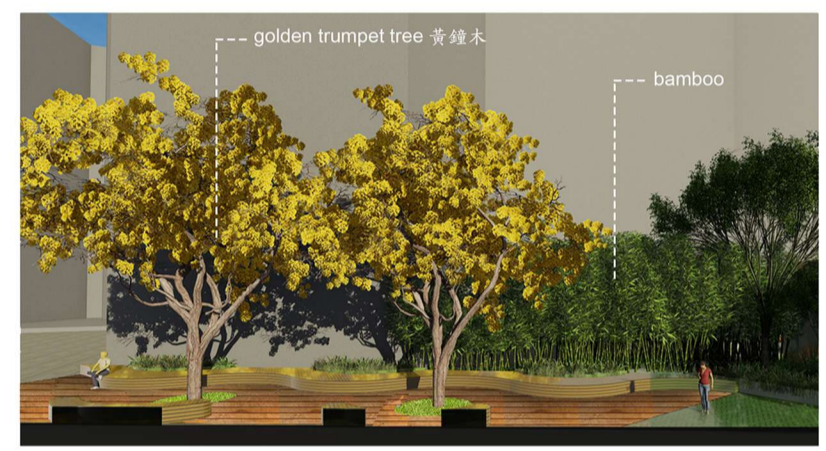
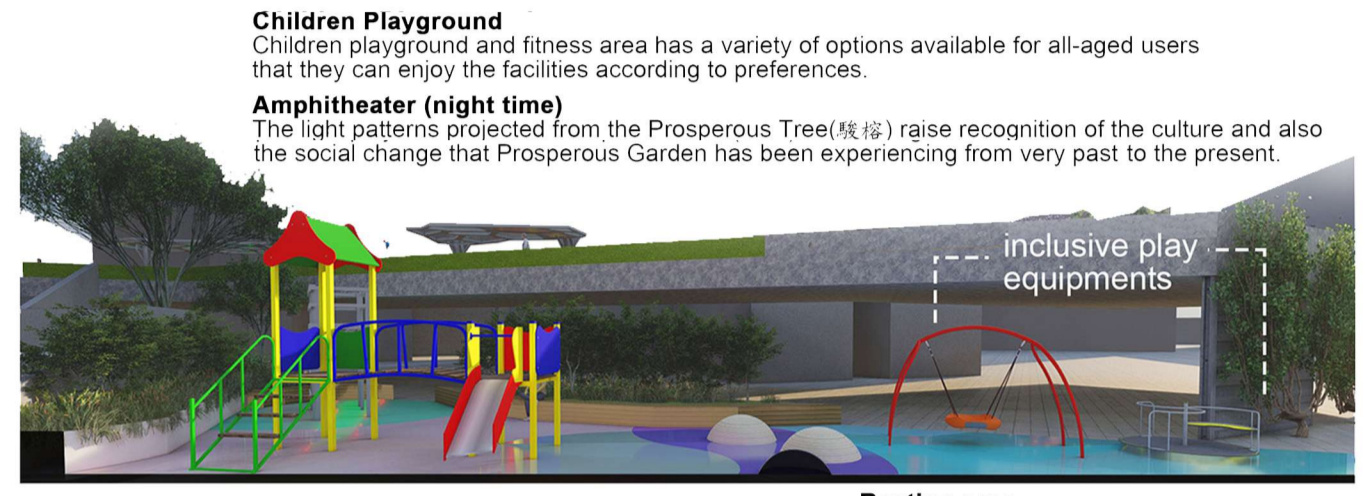
Amphitheater
In the evening, the amphitheater will have a light show. The design of the spot light pattern projected from the Prosperous Tree (慶榕) are inspired from Yau Ma Tei landmark and culture. We believe that this design can be one of the distinct features of Prosperous Garden.

Recreational Area
Also, there is a sports venue including multi-functional ball court, table tennis, jogging trail available on the podium for users to exercise.

Sitting-out Areas
The shelters on podium are integrated with the ideas of sustainability and the sitting-out areas offer a distinctive public open space for dining, gathering and strengthening community cohesion.

Sensory Garden
The sensory garden provide a good venue for children and adults to get in touch with the nature, all the plants are well selected by us and the appearances and colours plants change throughout different seasons.

Sections of Ground Floor



Children Playground
Children playground and fitness area has a variety of options available for all-aged users that they can enjoy the facilities according to preferences.

Amphitheater (night time)
The light patterns projected from the Prosperous Tree (慶榕) raise recognition of the culture and also the social change that Prosperous Garden has been experiencing from very past to the present.

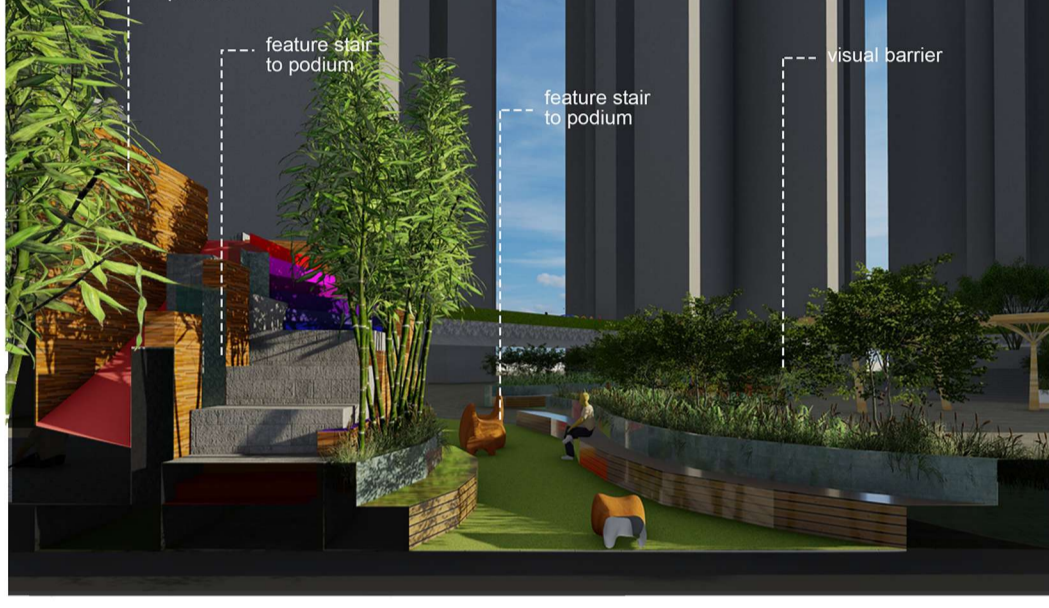
Sensory and community garden
The design of the benches is inspired by the artworks of local artists and to promote positive cross-cultural communication and anchor children with elderly.

Fitness area
The QR-Code on each fitness machine assists users in monitoring their health condition and synchronizes their amount of exercise with mobile devices.

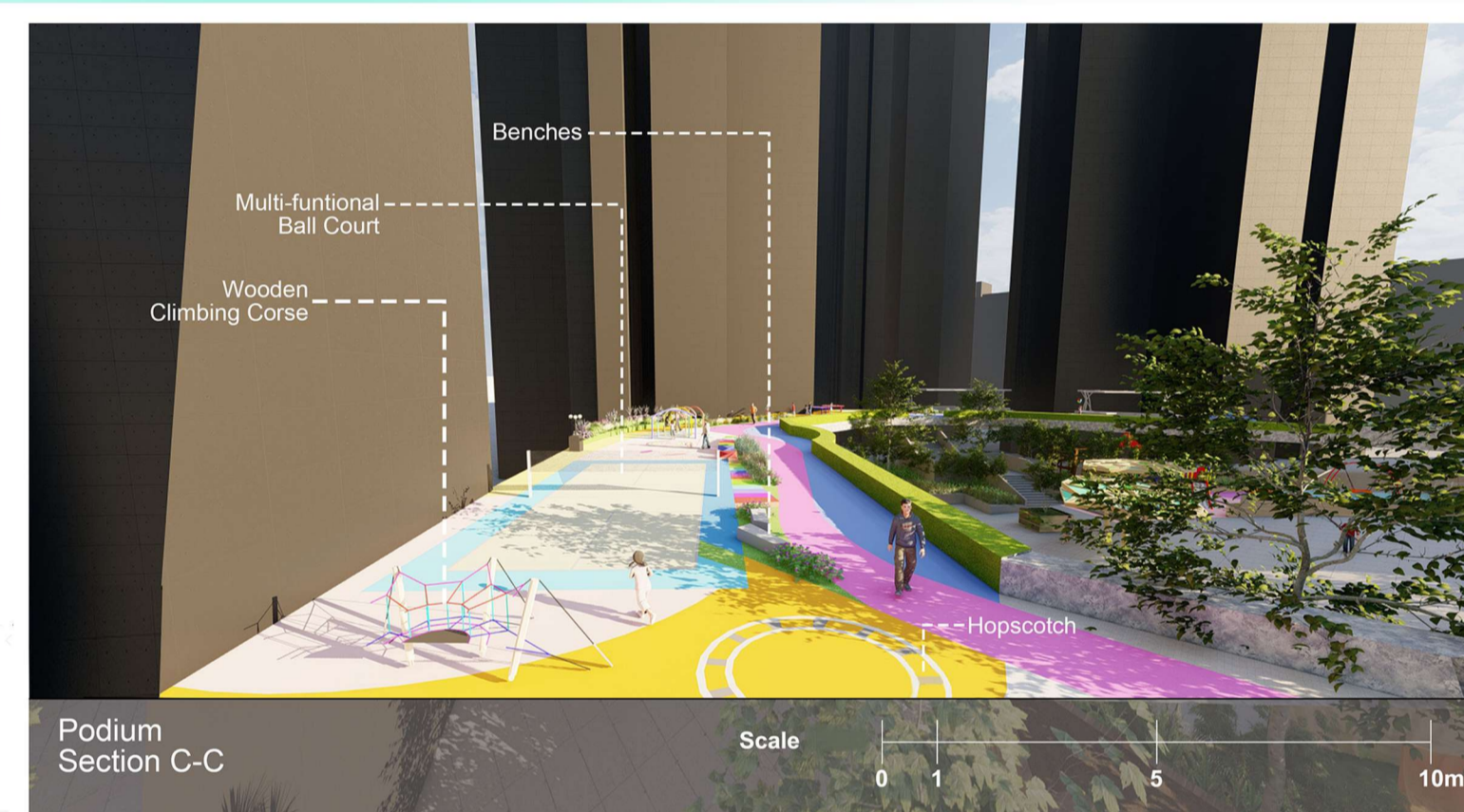
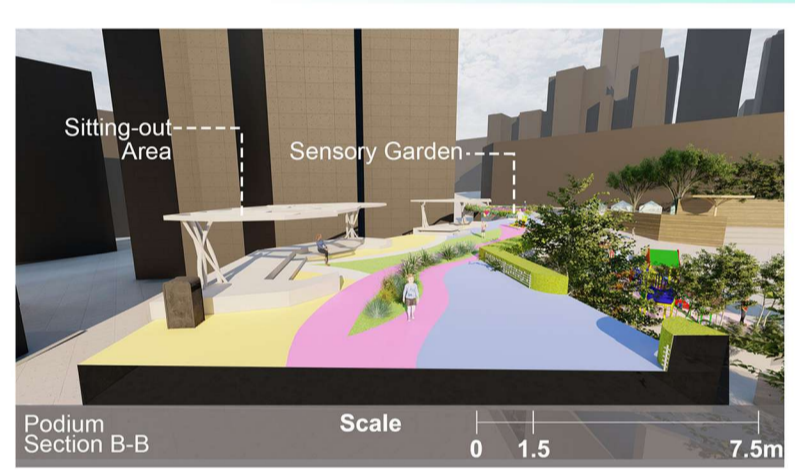
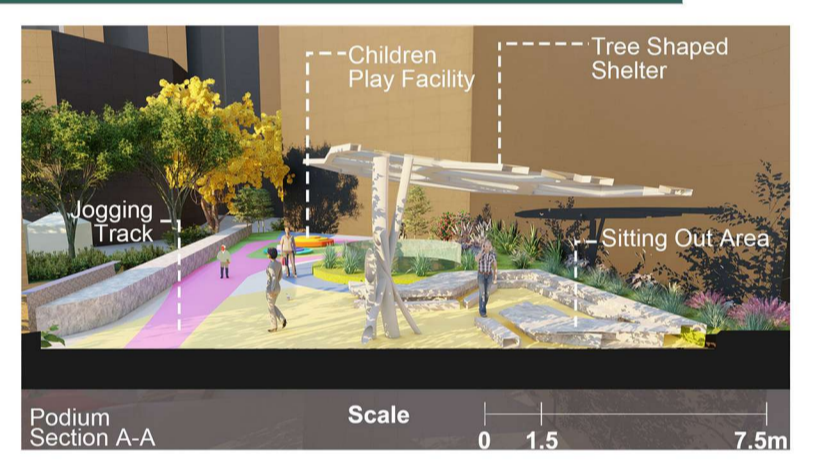
Prosperous Tree
The shelters Prosperous Tree (慶榕) strengthening sense of belonging and implying the historical value of the Prosperous Garden with storytelling design. Also, it advances the environment setting with a misting system and offers additional cultural foci for the gathering events.

Resting area
Being in the multi-functional public area. Distinctive plants are used in this area. Relaxing atmosphere is created for people who just visited portable exhibition.

Overall area
Jadeite Terrace improves the overall accessibility and spatial design of the leisure area in Prosperous Garden.



Sections of Podium



Sitting-out areas
The shelters on podium are installed with the colored bifacial solar panels to fit the trend of utilizing renewable energy and reduce the maintenance expenditure in the long term. Apart from economic benefits, it promotes the ideas of sustainable development and a positive corporate image for Prosperous Garden.

Recreational area (1 jogging track, 2 common area)
1. There are QR-Code on the ends of the jogging track that helps record the exercise intensity and number of steps like a pedometer. Once it synchronizes with a mobile device, it would notify the users to stop exercising if there's any abnormal heartbeat detected.
2. The age-friendly recreational zone and the distinctive sitting-out areas on the podium encourage users to enjoy leisure time with neighbourhood and relatives.

Prosperous Tree
The misting system installed in Prosperous Tree (慶榕) ease heat island effect by bringing cooling effects with the water vapor and the drop in temperature lessen the air-conditioning usage efficiently especially in Summer time.

Sensory Garden
The sensory garden offers a good venue for whole child development and dementia care that sensory stimulation is beneficial to brain health (Sassi & Prolo, 2017)

Podium Section D-D
Labels: Countour play, Multi-functional ball court, Mist play, Recreational area, Sitting-out area, Jogging track, Sensory garden.

Planting Scheme Sensory Garden



Planting strategy
The plants selected for sensory garden are having attractive colours, shapes, with fragrant smell and even have special texture, and these can stimulate users' different senses and enhancing their health and well-being especially beneficial to elderly health and whole child development. (Sassi & Prolo, 2017)

Sedum reflexum 反曲景天	Arachis duranensis 蔓花生	Mentha Haplocalycis Herba 薄荷
Globe amaranth 千日紅	Lantana camara 馬櫻丹	Lavandula angustifolia 薰衣草
Asparagus densiflorus 'Meyer' 狐尾天冬	Salvia rosmarinus 迷迭香	Dieffenbachia picta 花葉萬年青
Jasminum sambac 茉莉花	Aglaonema Pattaya Beauty 雅麗皇后	Brassica oleracea var. acephala 羽衣甘藍

Legend

- Plants that have sweet and fragrant smell
- Plants have eye-catching colours
- Plants have special texture

Blow-up Details of Healing Garden and Featured Furniture

Prosperous Tree
Location: Amphitheater
Material: Cypress Wood
Scale: 1:500

Floating Clouds
Location: Sensory and Community Garden
Material: Cedar Wood
Scale: 1:100

Rhythm Wave
Location: Sensory and Community Garden
Material: Wood-plastic Composites
Scale: 1:100

Sitting-Out Area on podium
Concrete tables, Movable benches, Colored bifacial solar panels, Painted steel columns, Long concrete benches.

