

Time Machine

Let Everyone Shine in this place

- S** Easily accessible
A gathering area of residents in Yau Ma Tei
- W** Limited types of play equipment
Lack of barrier free facilities
- O** People from nearby cinema, restaurants and schools will come
- T** Equipment domination of children

Design Concept:

There are so many valuable historic and cultural elements in Yau Ma Tei. Time machine will serve as an **agent of socialization** to recall people of the past of Yau Ma Tei and reflect upon their relations with this place, reinforcing their sense of identity and community.

Aim at...

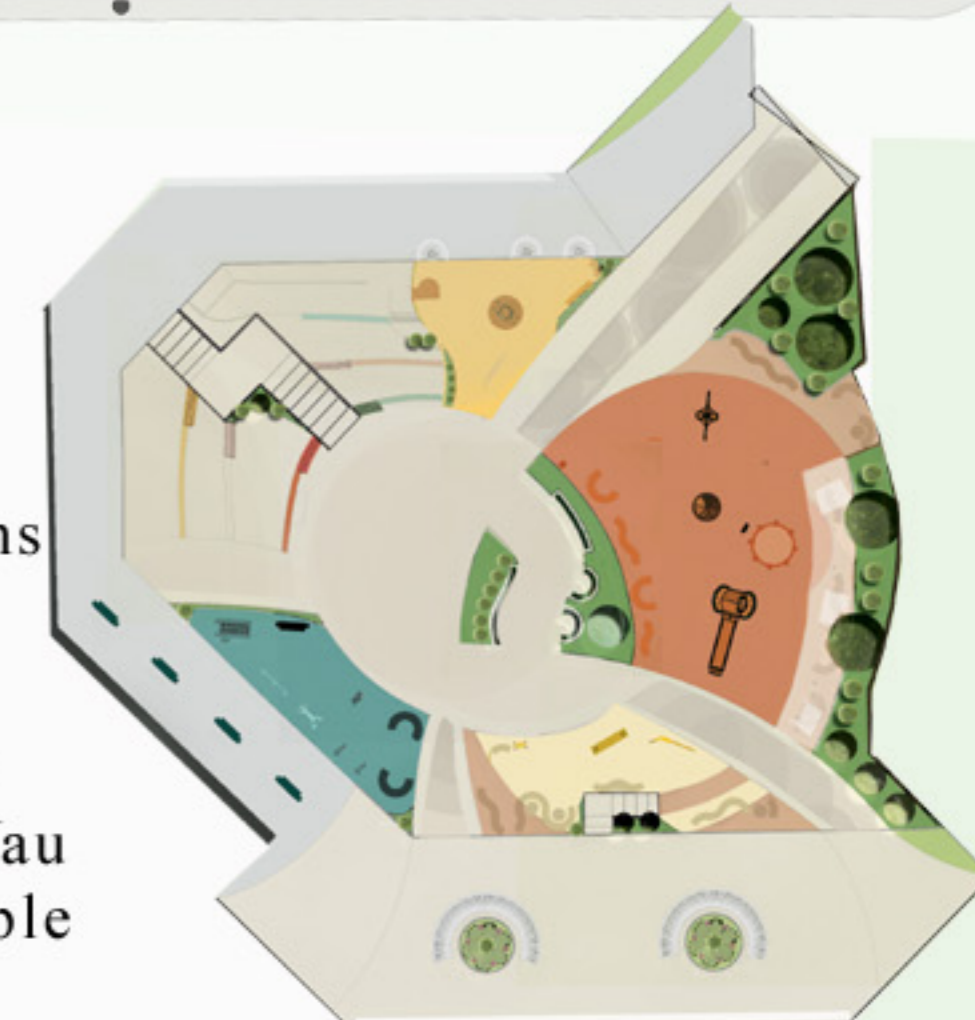
1. Allow them travel back in time
2. Break the barriers among different generations and bring them together



Design Strategies:

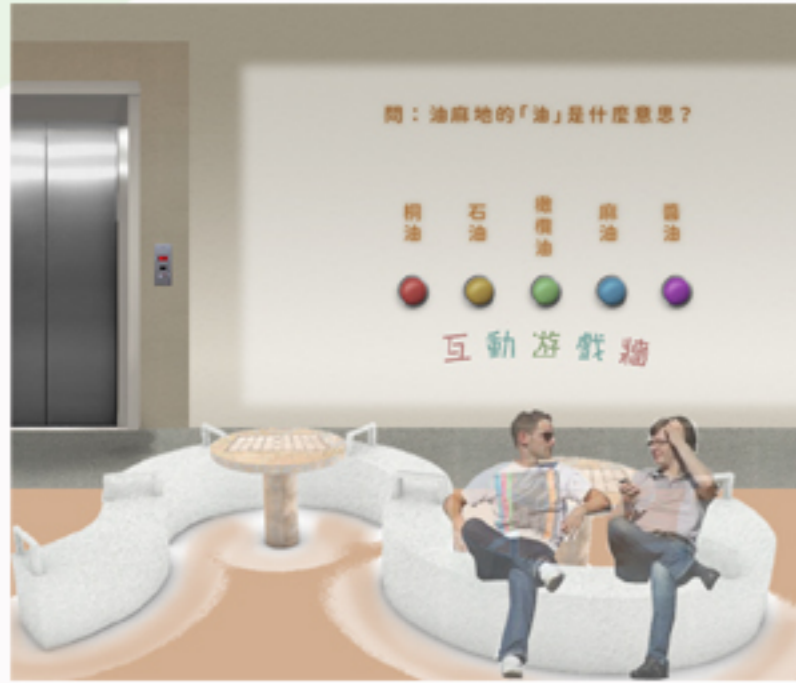
Site layout conveys the idea of social integration. Each of intersecting curve and circle represents an individual or a generation to interact with others or other generations freely in the playspace.

We integrate a wide range of elements in the decorations and urban furnitures, such as mural painting, photos of Yau Ma Tei in the past and the ship decoration to remind people of transformation of Yau Ma Tei.



Ground Floor Plan

Intergenerational Playspace



E-wall



Time Tunnel



All people can use the place freely

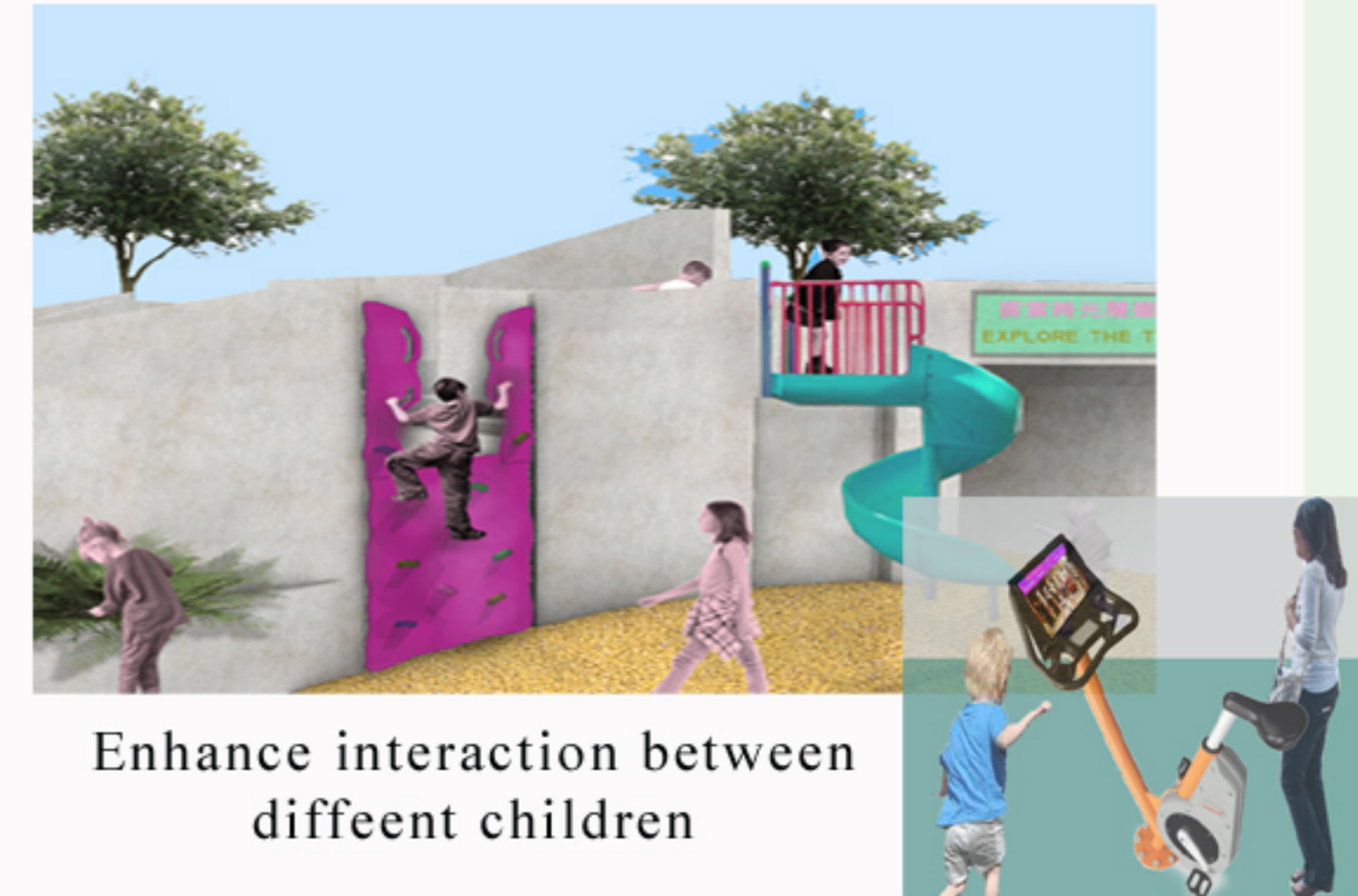
Age-Neutral and Universal Design

Play facilities in Time Machine are **age-neutral** and versatile, enabling people of different ages and physical abilities to play together.

With the integration of cultural and technological elements in the design, it provides more teaching and **learning opportunities** among generations.



All ages can participate



Enhance interaction between different children

Intergenerational communication

Provide opportunities for the grown-ups to teach the younger generation the history and development of this community and share their past living experience in Yau Ma Tei.

The elder generation can gain **mental satisfaction** by reminiscing their old days.

Younger generation can learn more about their community, helping them develop their **sense of identity**.



Touch Wall



Ship-shape design