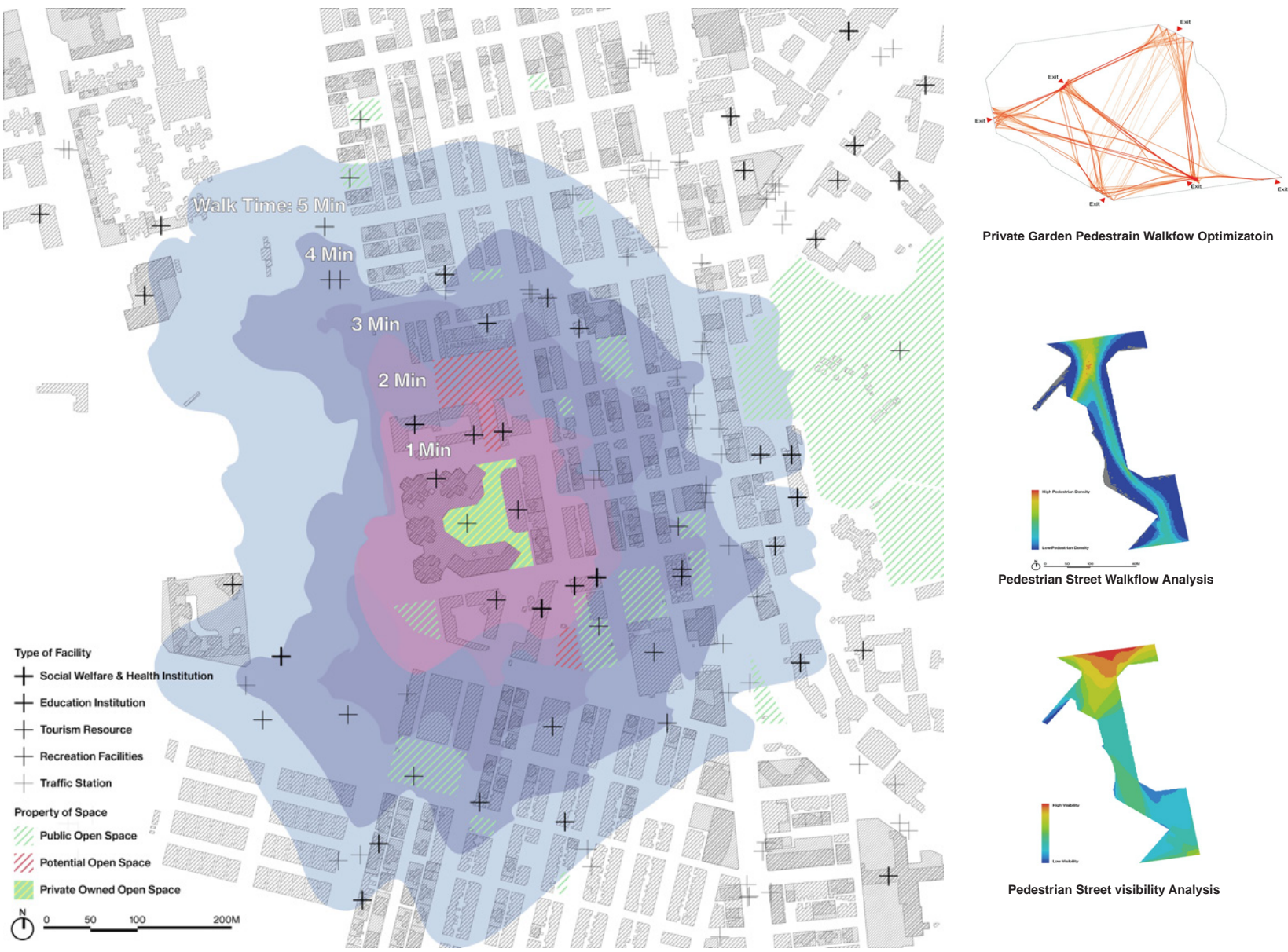


The Garden of Dynamic Five Senses

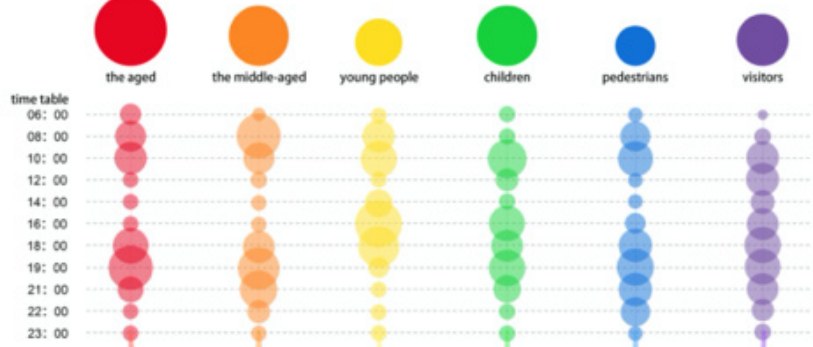
Location and Accessibility Analysis



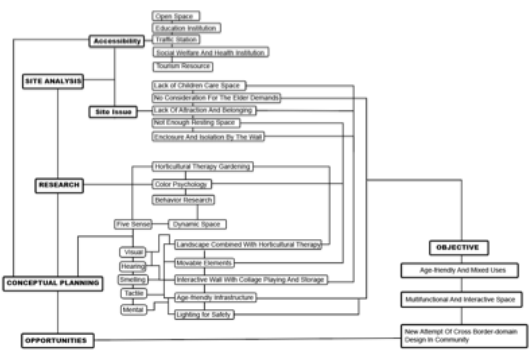
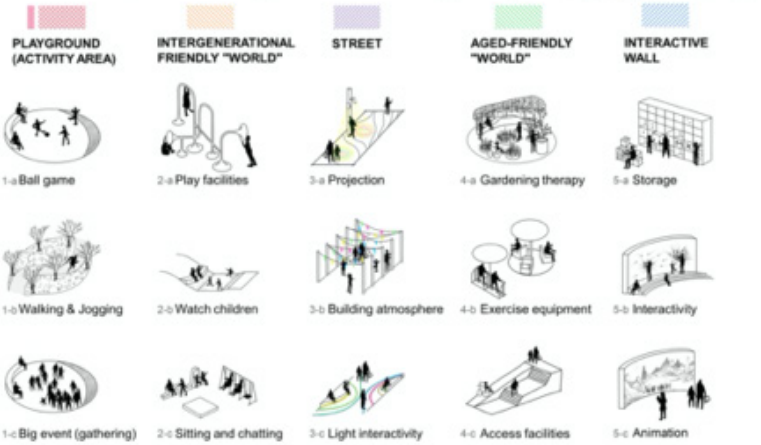
The scheme aims to invent a dynamic space overlaying diverse lifestyle from different age groups during various periods, integrating elements from multi-disciplines to strengthen the five senses design for users. A greater age-friendly outdoor space with connectivity, accessibility and interactivity for the optimization space efficiency can be provided. Five senses garden design can provide well defined and high-quality space design with fully applying Horticultural Therapy Gardening and Color Psychology. The embodiment of five senses is also a dynamic process of space.



POPULATION & ACTIVITY ANALYSIS



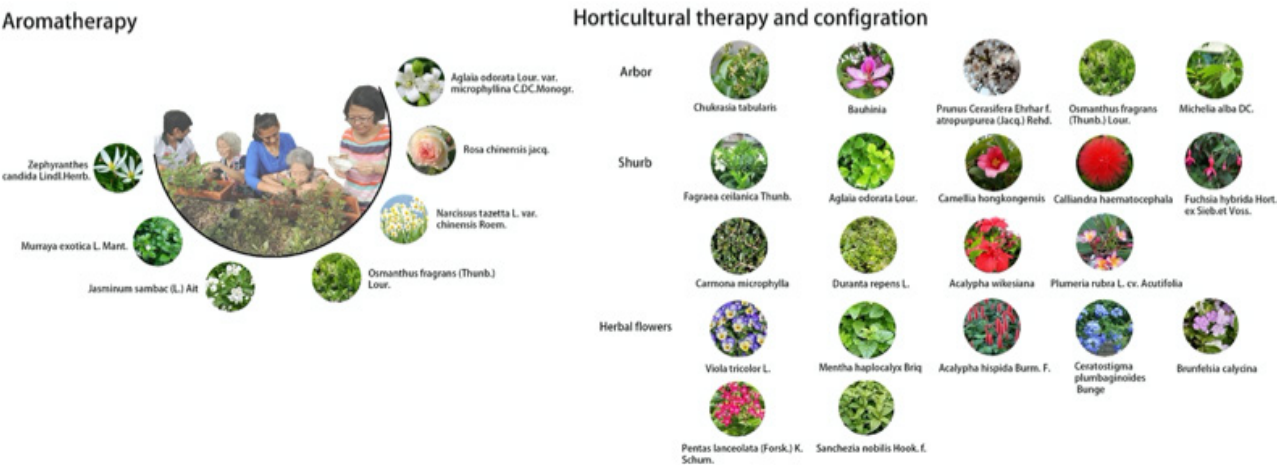
Due to the aging problems and limited public space in Yau Ma Tei, the functional design should be given various functional considerations about different group concerns especially for vulnerable members (the elder and children). Moreover, greater efficiency of space uses and more lifestyle choice are highly required .



The design of the community garden is tended to be all-age complex place.

The overall design of the project combines color guidance and the spatial zoning with various functions such as jogging, entertainment, resting ect. Thus, people could have different activities during different times.

Landscape with Horticultural Therapy (Garden)



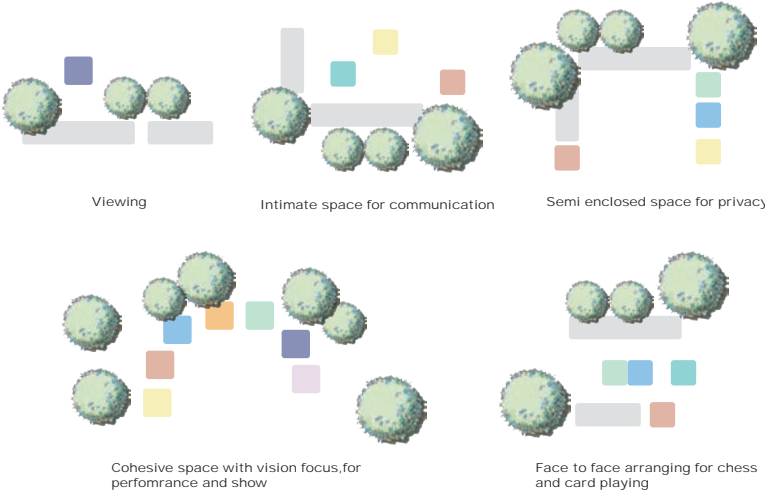
Gardening combined with Aromatherapy and Horticultural therapy can provide a high-quality landscape of more activities for elder people, sharing a harmonious environment with residents. Apart from the provision for a shaded and comfortable public realm, vertical greening can be used to mitigate the microclimate and reduce the heat island effect.



The Horticultural Garden is located on the first floor and the podium. Besides, moveable plots are provided for temporary decoration, allowing individuals adapt and modify their given environment rearranging furniture, changing the decoration, planting the garden.

The colorful pavement is playing important role of guiding vulnerable members to different entrances.

Movable furniture (Playground and Recreation Area)



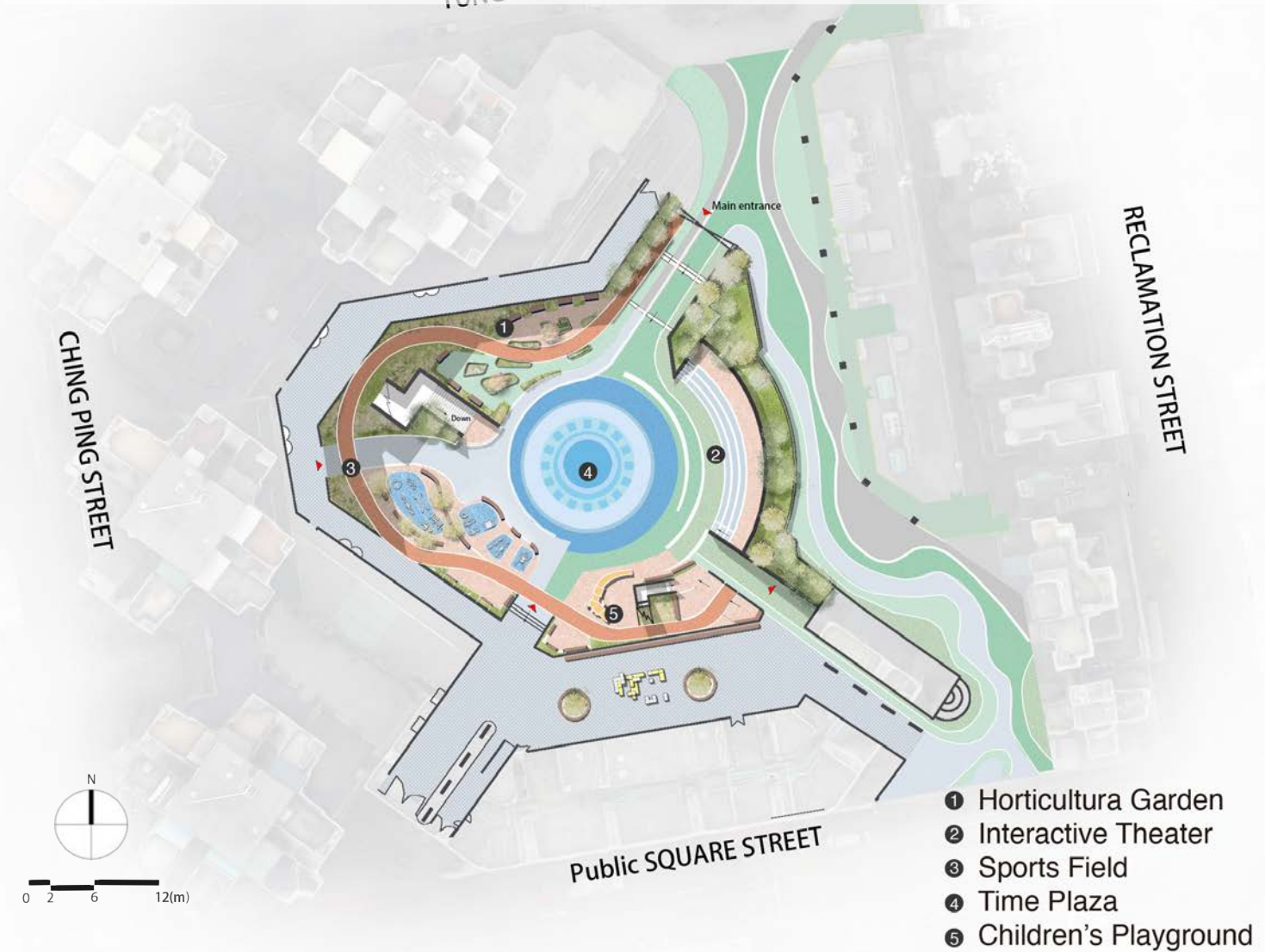
Space configuration and creation for subplaces through color lines and movable elements. The spaces for activities or private communicative can be provided for convenience and comfort, and Personalization of movable elements (small-scale moveable seating, temporary plants pots, collage playing wall) .



Leveraging the free space in the middle, the movable bookshelf in covered walkway creates a friendly atmosphere of books, thus increasing neighborhood interaction.

Design Plan(Ground)

There are five areas on the ground: Horticultura Garden, Interactive Theater, Sports Field, Time Plaza, and Children's Playground. According to the current situation, the possibility of design according to the intergenerational users is fully explored.



Lighting Interactivity (Interactive Area and Street)



Light interactivity such as wall projection provides entertainment and enjoyment to the public. Based on Color Psychology, various colors convey different feelings and perception, which is beneficial to elderly visual impairment and Children's growth. Signing and wayfinding elements shall be cohesively integrated to emphasize security for residents and the creation of family-oriented neighborhoods.

Design Plan(Podium)

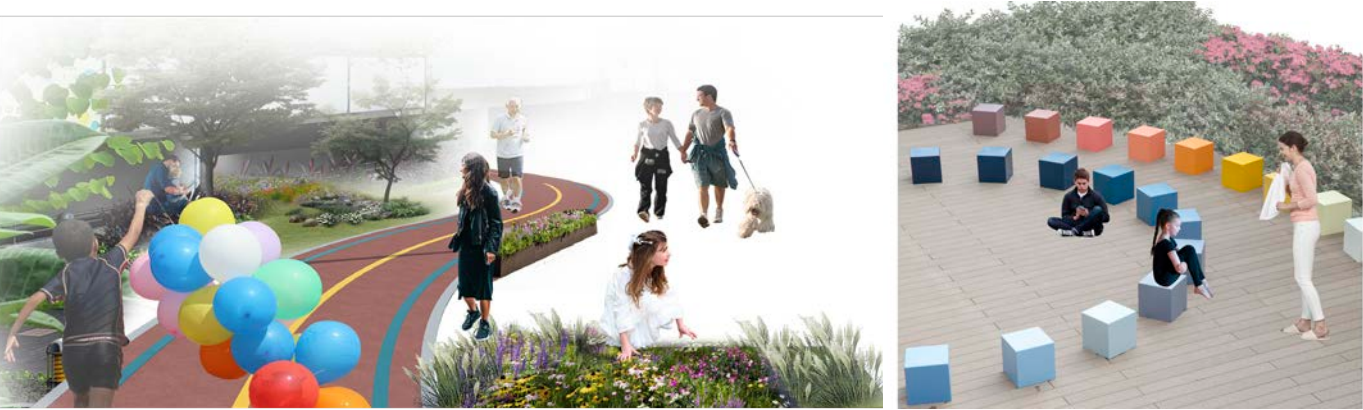
For the podium design, the slight improvement is intended to make more functional elements such as movable plotted landscape and horticultural Garden for exhibition and greenery design. Seat facilities applied night lights ensure the safety of the night.



Age-friendly Infrastructure (Recreation Area)



Based on Color Psychology, various colors convey different feelings and perception, which can serve as a vital role to guide their behaviors. Age neutral infrastructure with smart design to all ages is welcome and multicultural, which concerns safety issues and make it enjoyable playgrounds for both.



The pavement of the runway is made of anti-skid soft material. There is a designed convalescent garden landscape around.

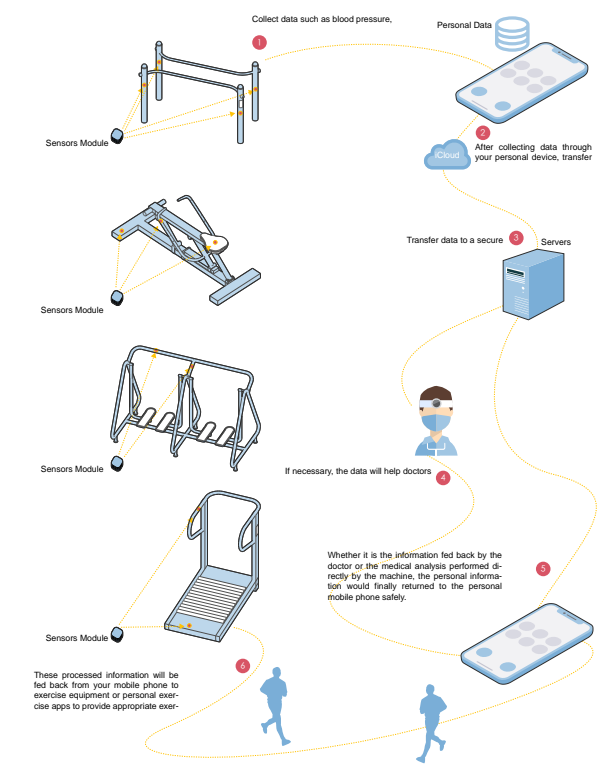
Interactive wall with Collage playing and storage (Interactive Area)



For the connectedness and integration for inner and outer space, it is proposed to give a more varied and complex perimeter with multimedia and interactive design (projections) on the wall, and the

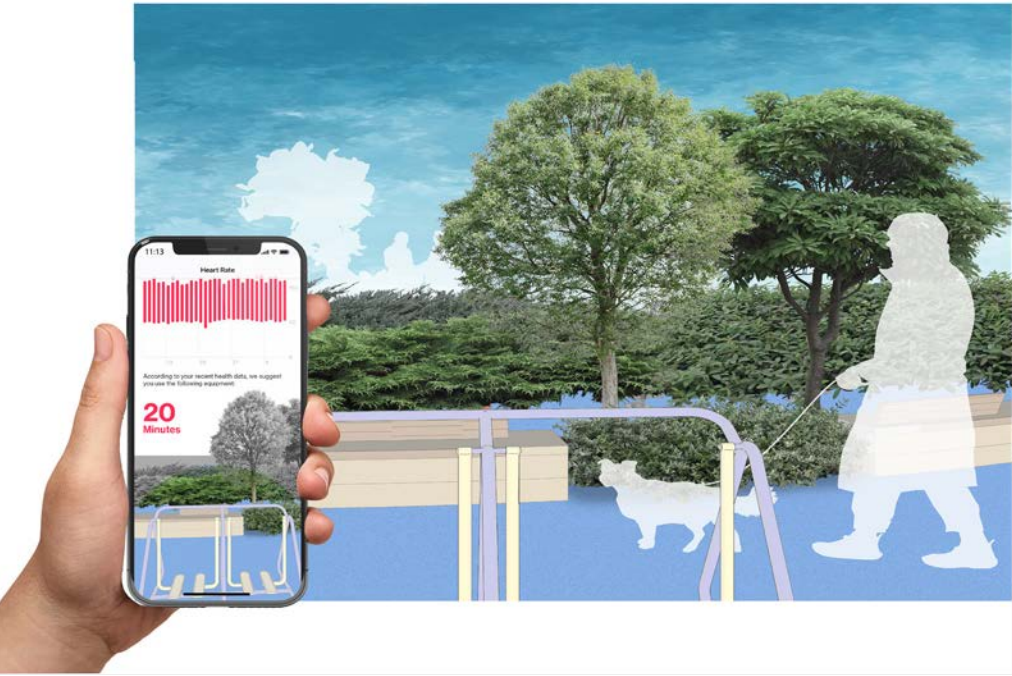
IoT Application

The key sensors for information collection by IOT are applied in the activity facilities of the project.



A series of flow-process diagram shows and linkage with the project.

- 1) what kind of facilities are used to collect data,
- 2) how to connect the data to the mobile app,
- 3) what the mobile app can achieve by using the data.



Through collecting and analyzing personal data from different parts of sensors, a health data statistics system is established with devices and Internet platform by using personal mobile phone as the data transmission center. After intelligent analysis, the corresponding health physiotherapy will be provided.