

# HANGING GARDEN

## Introduction

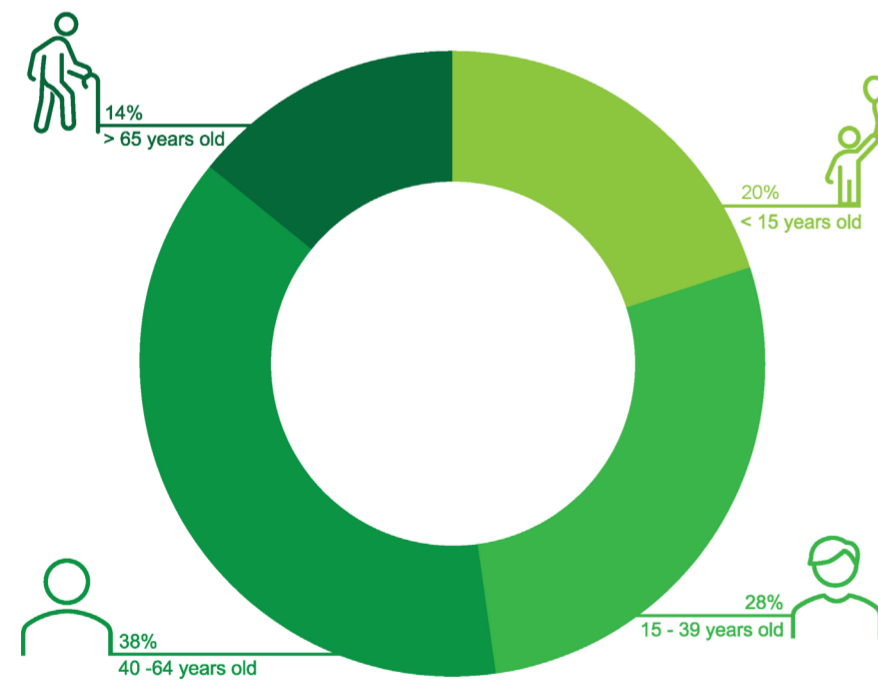
In our design, we make use of the area of the podium and redefine the function of the large staircase of the public garden to make use of unique spatial characteristics and space. Most of the facilities can be suitable for any age to use and a bridge to family or friends to improve their communication or relationship.



Prosperous Garden Park Location

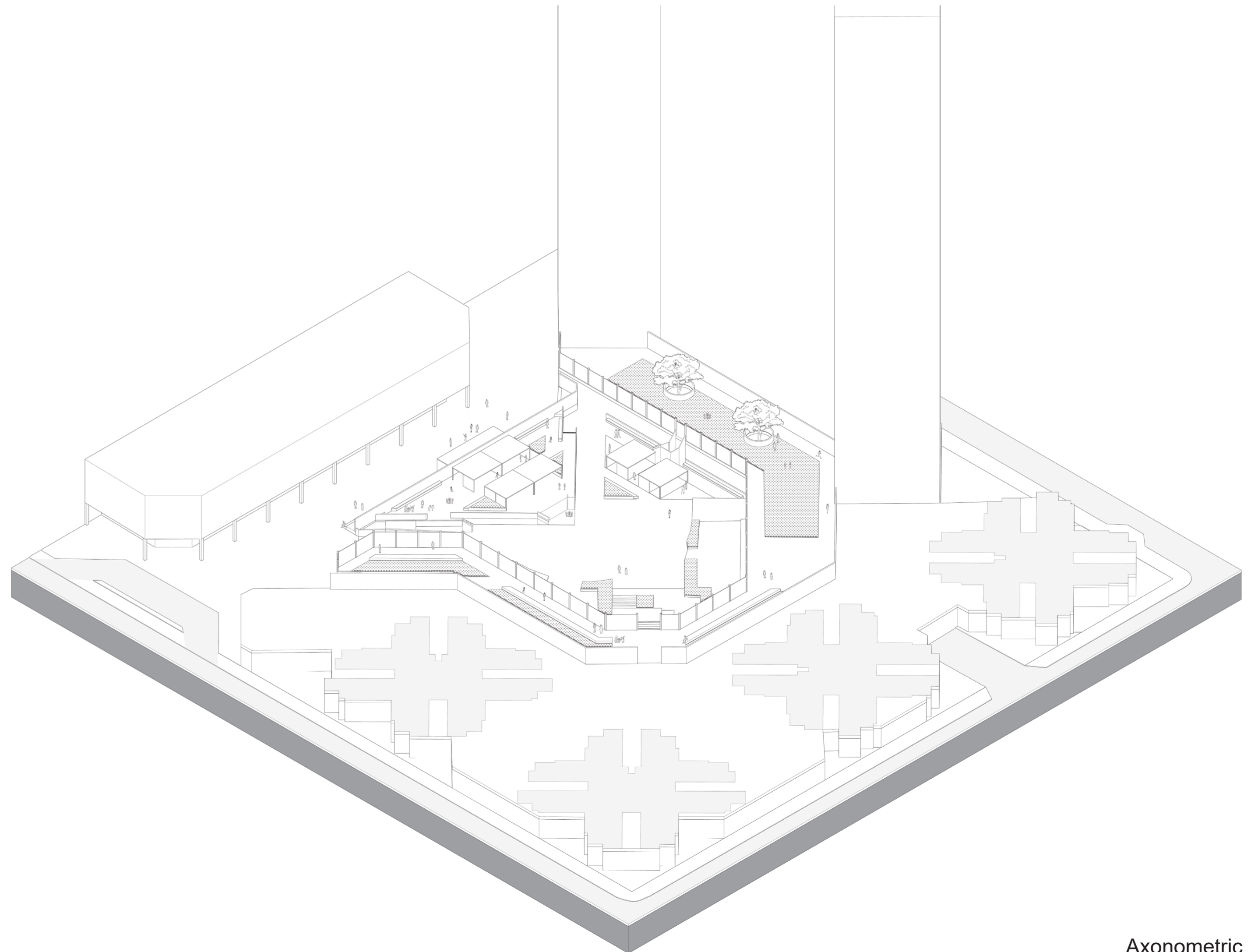
## Problems

1. *Yau Ma Tei* has 14 parks, but most of them are small and dilapidated. Also, in the interview the residents claim that there is a lack of leisure in *Yau Ma Tei* and their estate.



Human Structure of Yau Ma Tei

2. The main population of *Yau Ma Tei* is about 18-64 years old, which are teenagers and adults, but the local facilities are concentrated on the use of children and the elderly. There is lack of enough facilities to fulfill the demand of them.

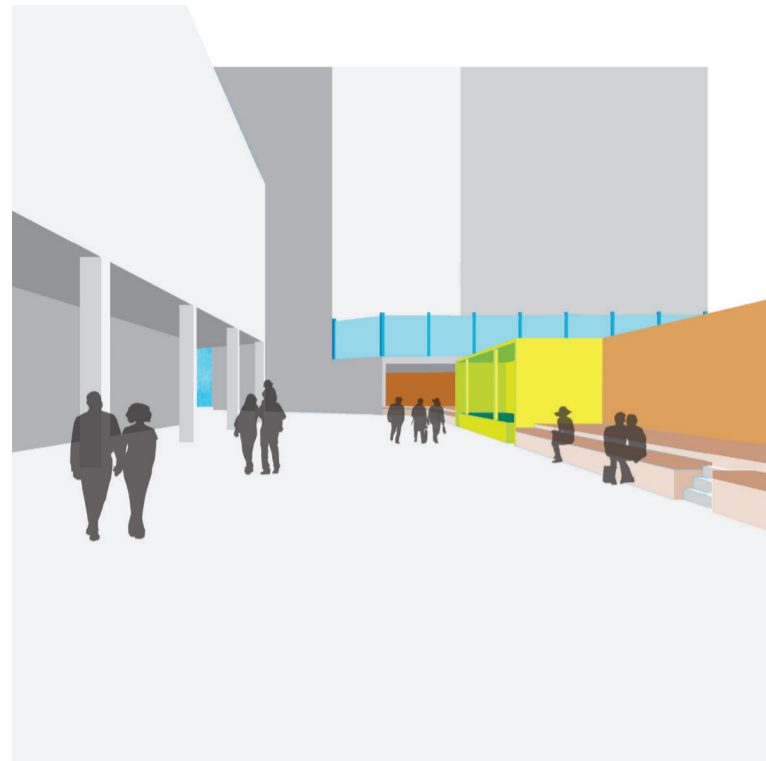


## Solutions

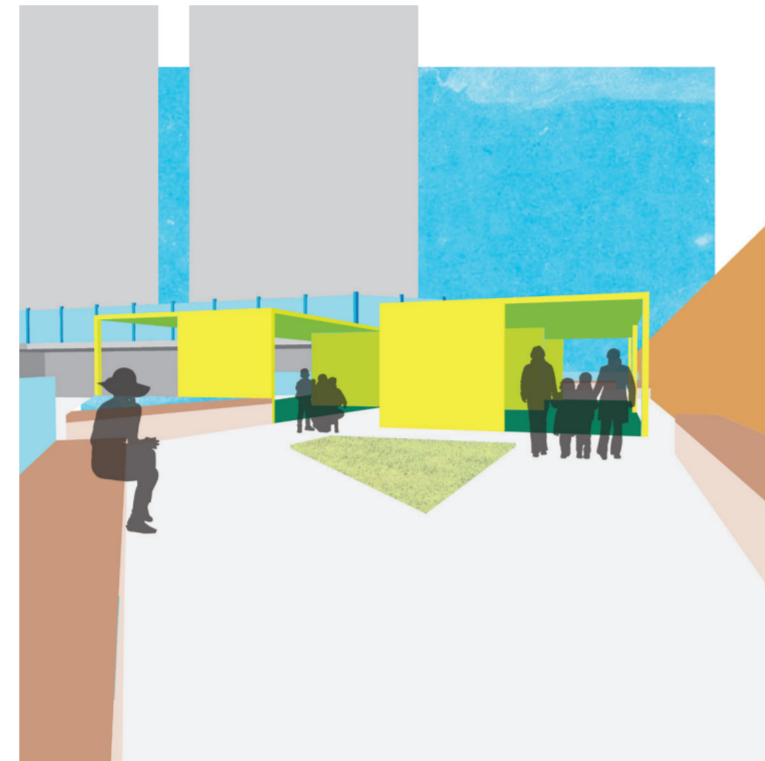
In our design half of the new facilities are suitable for their use like the plaza, lawn, and jogging path. Those will make them willing to go to the park.

Also, we will add the features that allow the park to have the potential to become a local district park to not only reach the demand of Prosperous Garden residents.

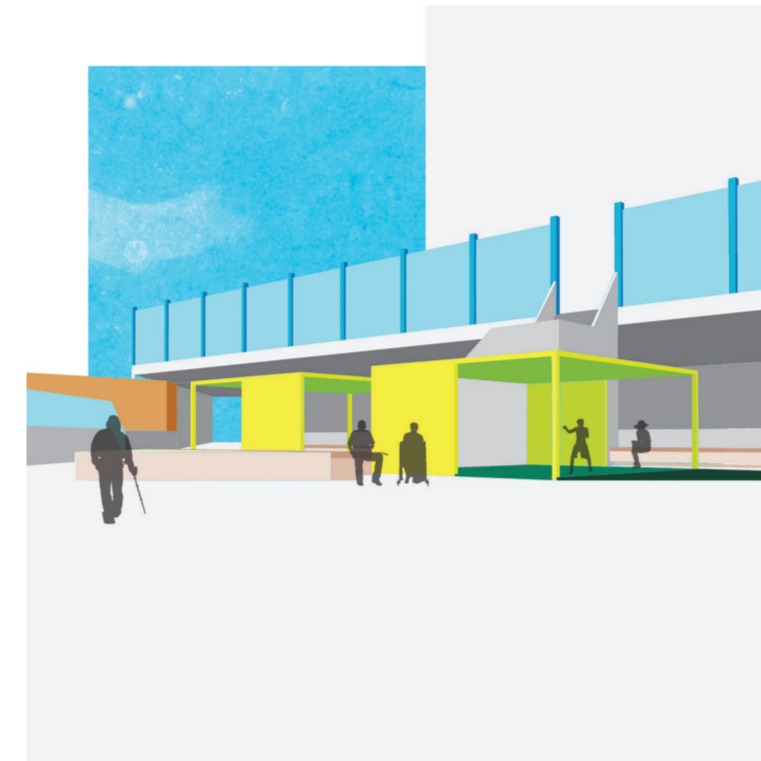
The increased amount of facilities can fulfill the want of the Prosperous Garden resident. The new way of placing the facilities can support more residents for using the park at the same time and reduce the cost and time for future replacement.



Corridor



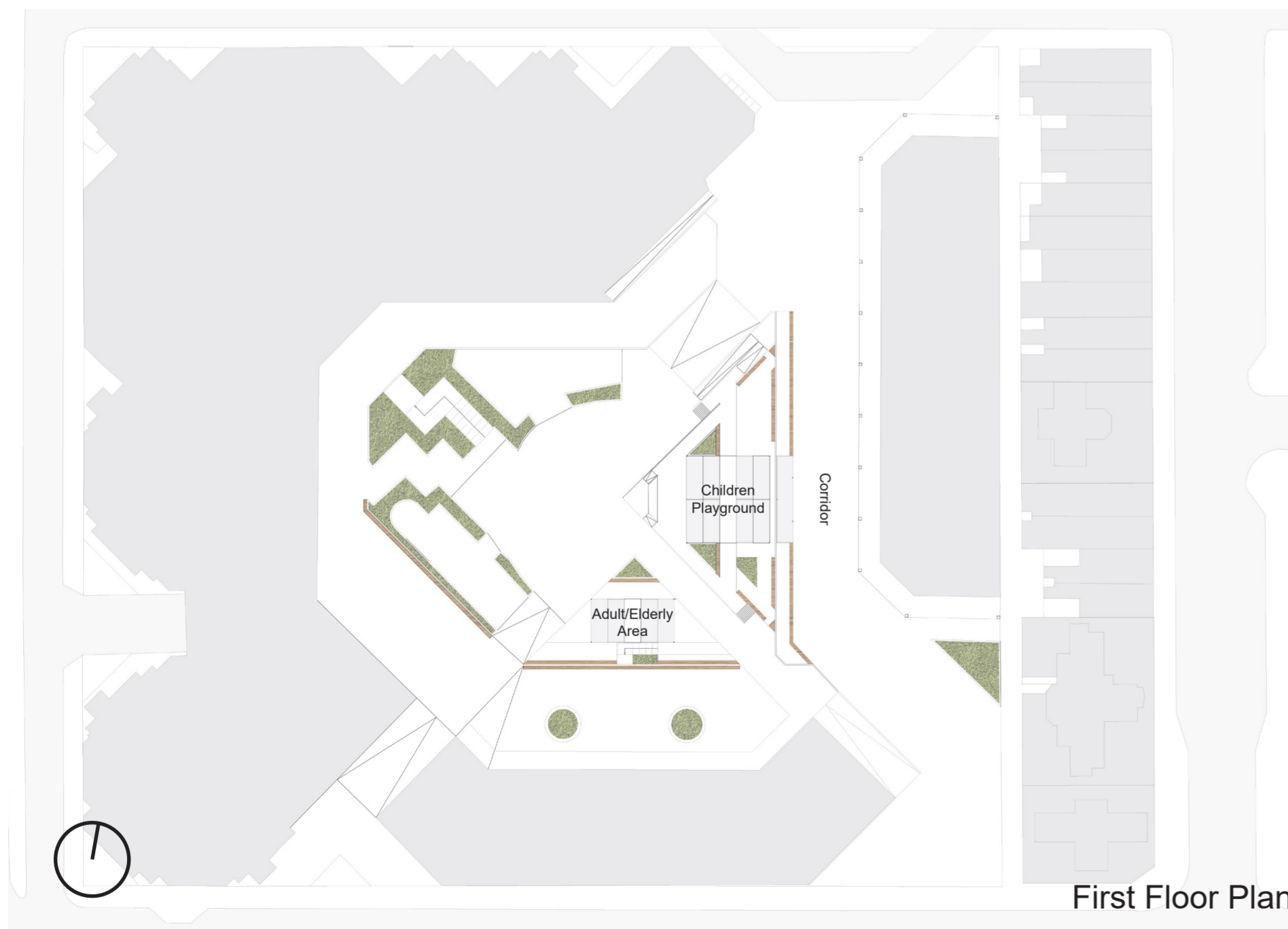
Children Playground



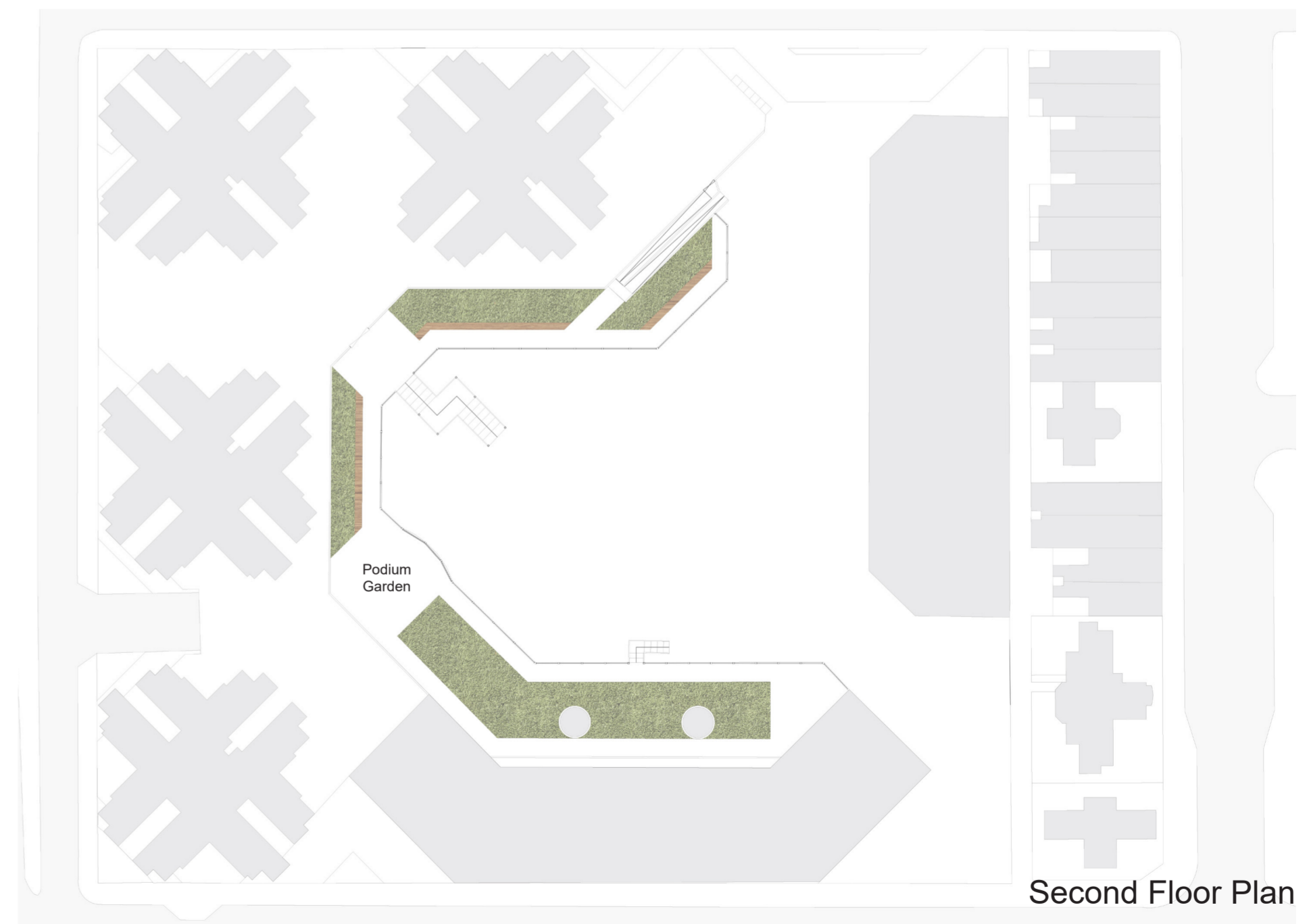
Adult/Elderly Area



Podium Garden



First Floor Plan



Second Floor Plan