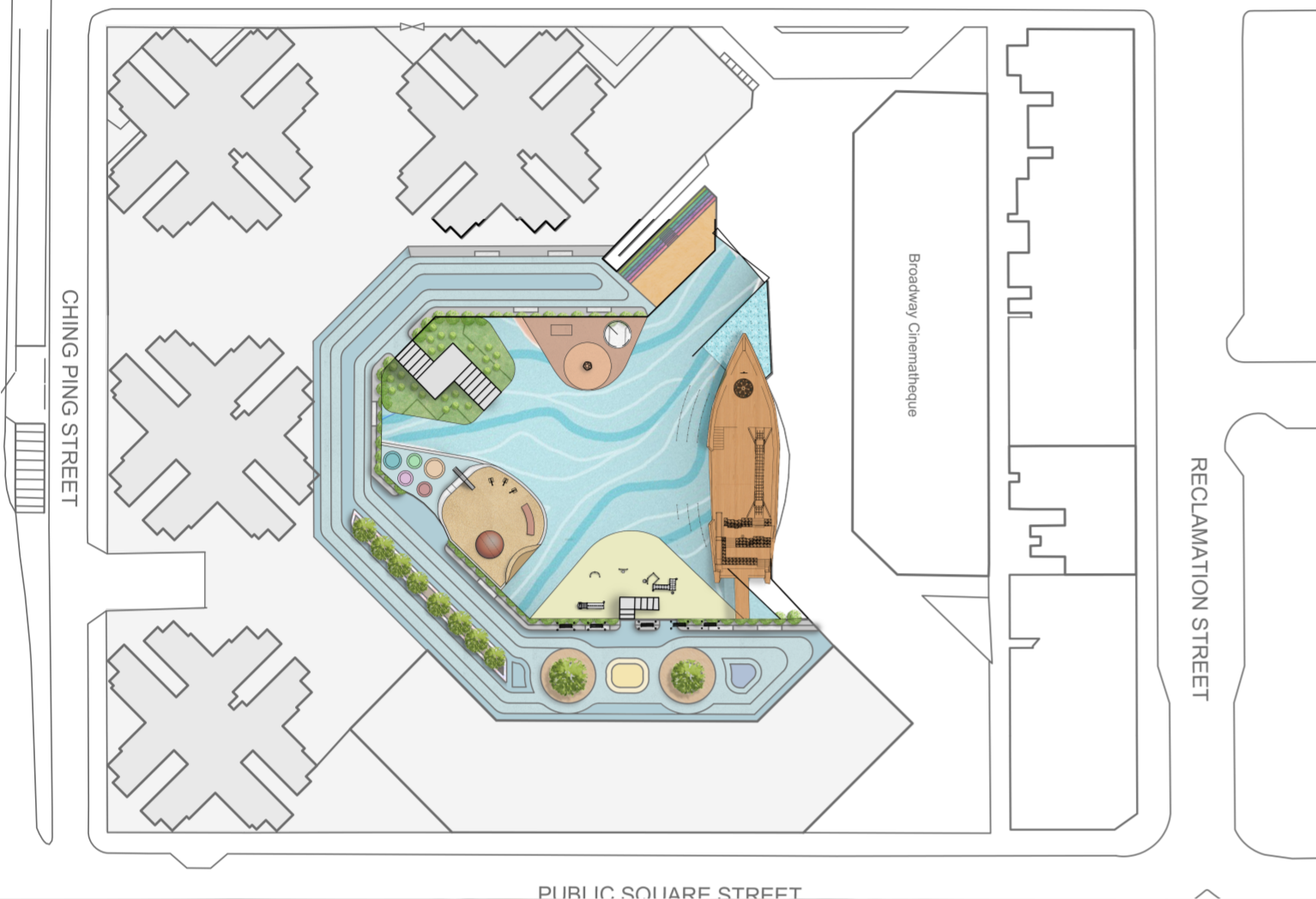


Piazza Aqua

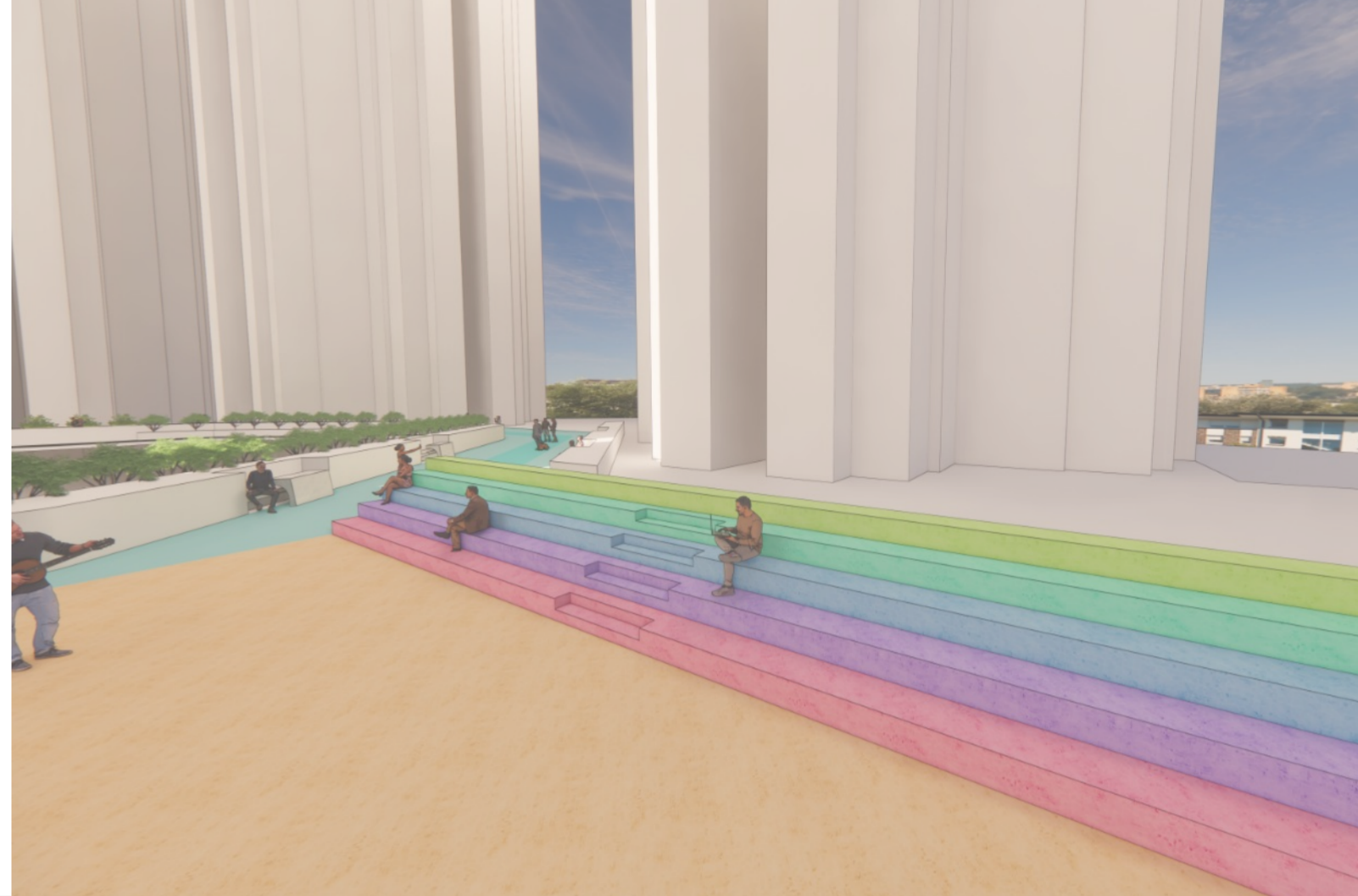
The concept of land reclamation from the history of Yau Ma Tei would be adopted in our design. Since the 1870s, the harbour had become home to fishermen where markets were set and resulted in early rapid development. Although Yau Ma Tei has evolved into a mix of residential and commercial towers due to reclamation, various vestiges from history can still be found in the district. With the reclamation work carried out over a century, the coastline has moved from Shanghai Street to West Kowloon area. We would rekindle the site's history by returning the coastline to the park. Not only can this resonate powerfully with the old users, but it can also educate the young users with the historical background of Yau Ma Tei.



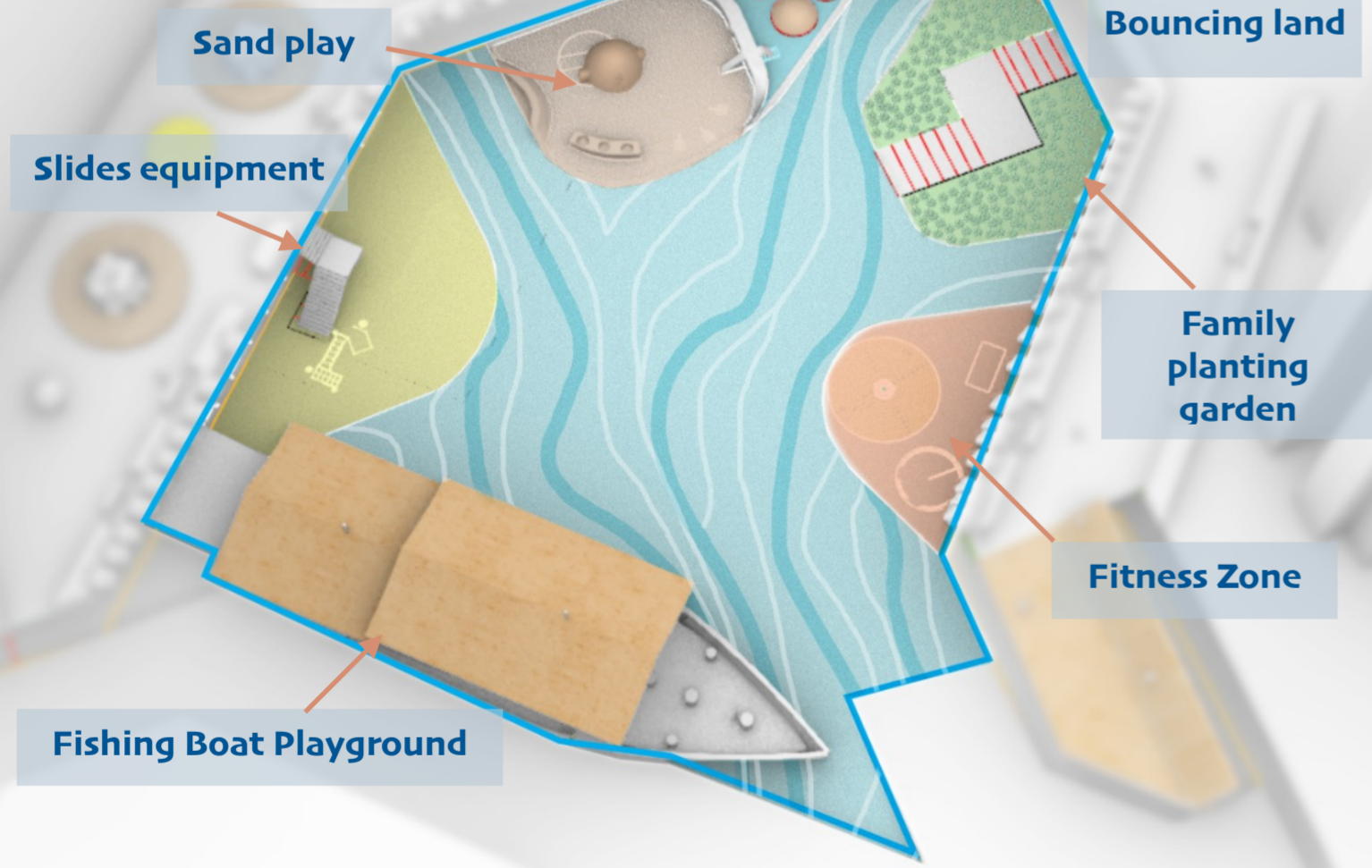
Master Plan



Podium

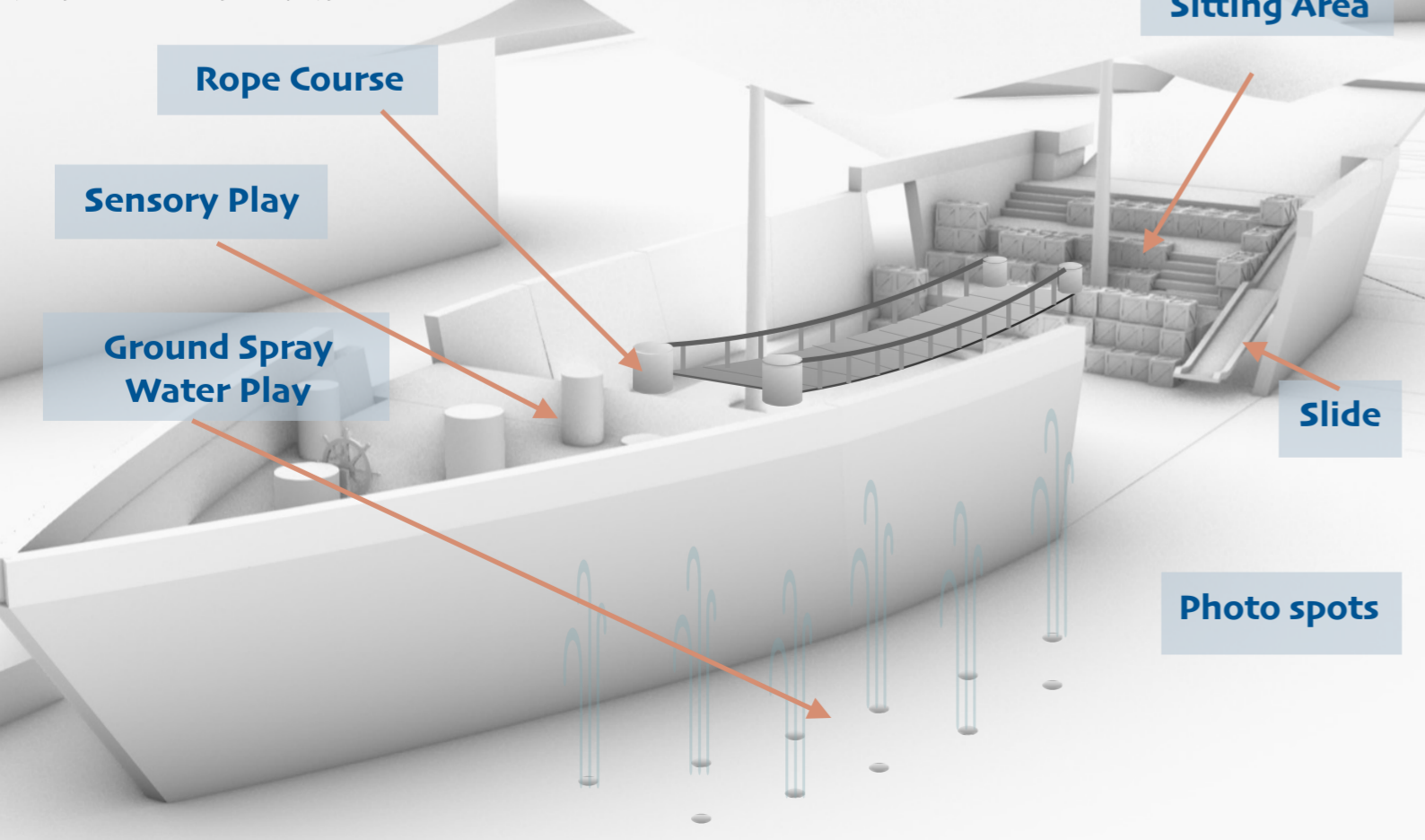


Playground Zoning



Fishing Boat Playground

The Fishing Boat Playground is designed as an eye-catching landmark for the park. As one of the thriving fishing harbour in the past, the coast of Yau Ma Tei was packed fully with fishing boats for sheltering. In order to recall the old memory for the elderly and introduce the history to the youngsters, the fishing boat playground is introduced to the Sea Zone.



Podium

