

Maximizing Data Benchmarking to Promote a Sustainable Planning of Age-Friendly Community

以數據量化推動長者友善的社區可持續規劃

Ir CS HO 何志誠

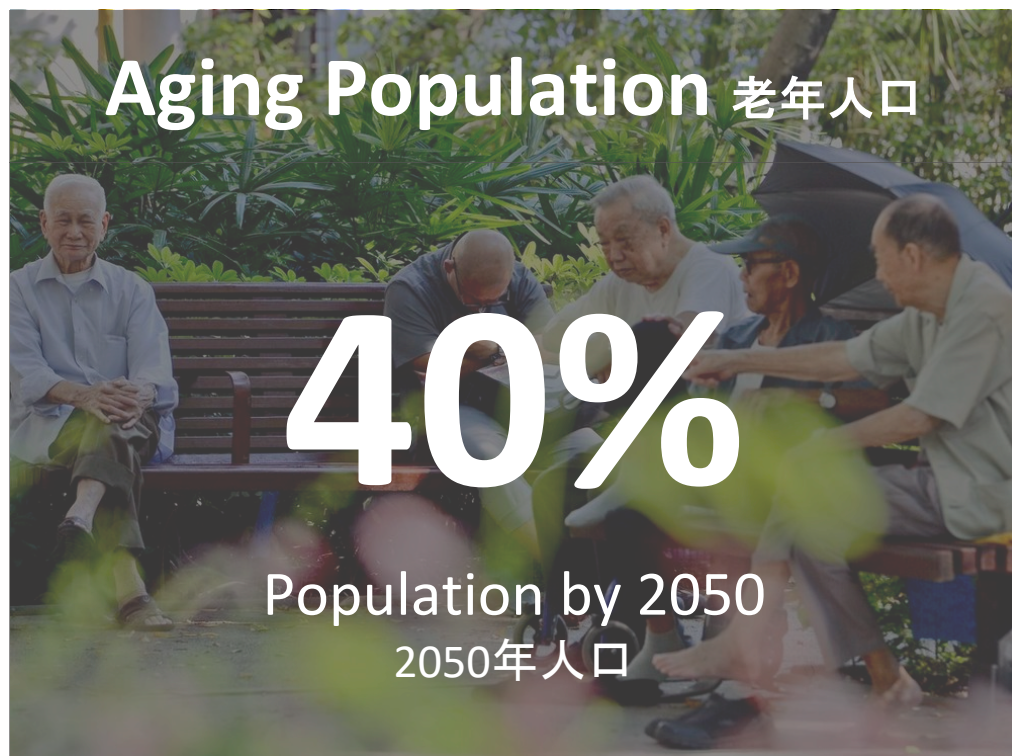
General Manager 總經理

BEAM Society Limited 建築環保評估協會



Double Aging Challenge

雙老化挑戰



➔ Can we tackle this challenge with advanced data analysis + community planning?
如何透過數據分析 + 社區規劃來應對雙老化挑戰？



Community Planning

社區規劃

Basic Data Collection 簡易數據收集



Measurements 量度：

- Adequacy of facilities
設施是否充足
- Building performances
樓宇表現

On-site Observation 落區視察



- Identify underlying needs
識別深層次需要
- Qualitative data
- 數據量化

Community Engagement 社區參與



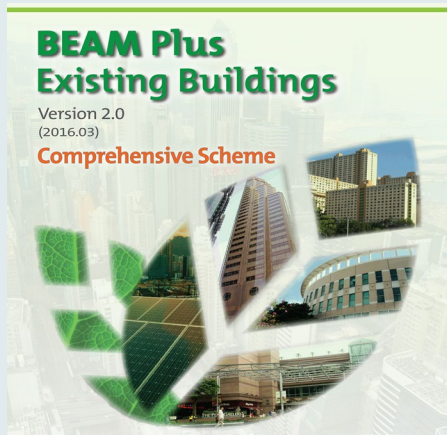
- Interact with local residence
與居民互動
- → listen to opinion
聆聽意見

What to do with the collected data?

如何對收集到的數據進行分析

Third-Party Assessment

第三方認證



BEAM Plus
綠建環評



- Measure **performance** of buildings and neighbourhood in sustainability 量度建築物及社區的可持續性表現
- Investigate **human and social capital** of community improvement 剖析社區改善中的人力和社會資本
- Covers **9 Performance Aspects** 覆蓋九大主要範疇



Management
營運管理



Energy
能源使用



Water Use
用水



Community
社區



Site
可持續地塊發展



Material and Waste
用材及廢物管理



Innovation and
Additions
創新



Outdoor
Environmental Quality
室外環境質素

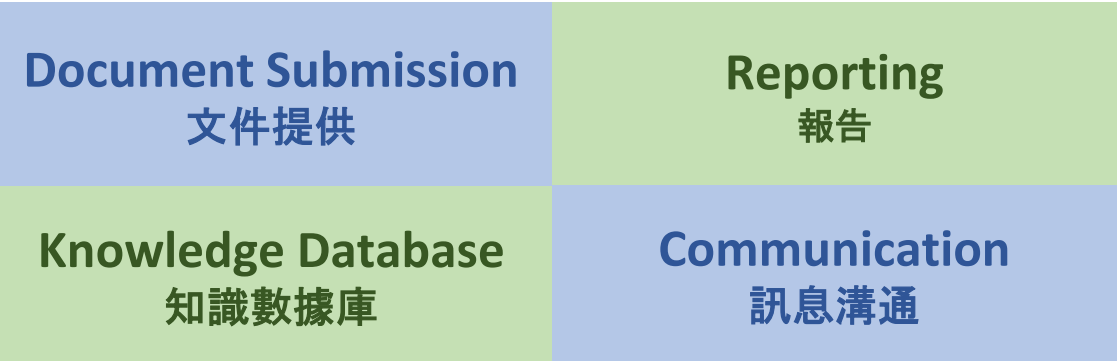
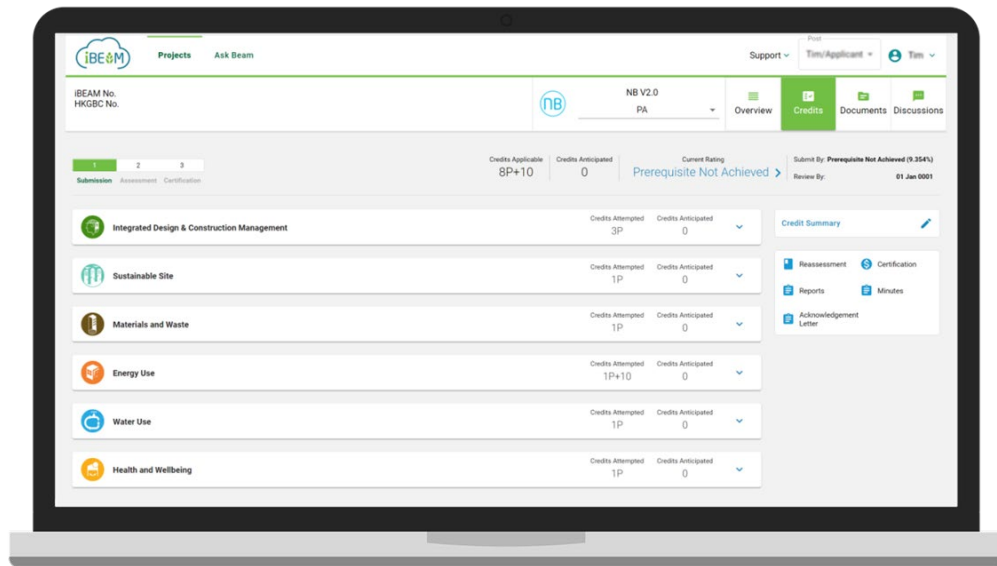


Indoor Environmental
Quality
健康與安舒



Assessment Automation System

智能化評估系統



- Customizing Bespoke Assessment 度身訂做評估

FORM BUILDER 表格建造功能
Build your own form 自家制定表格



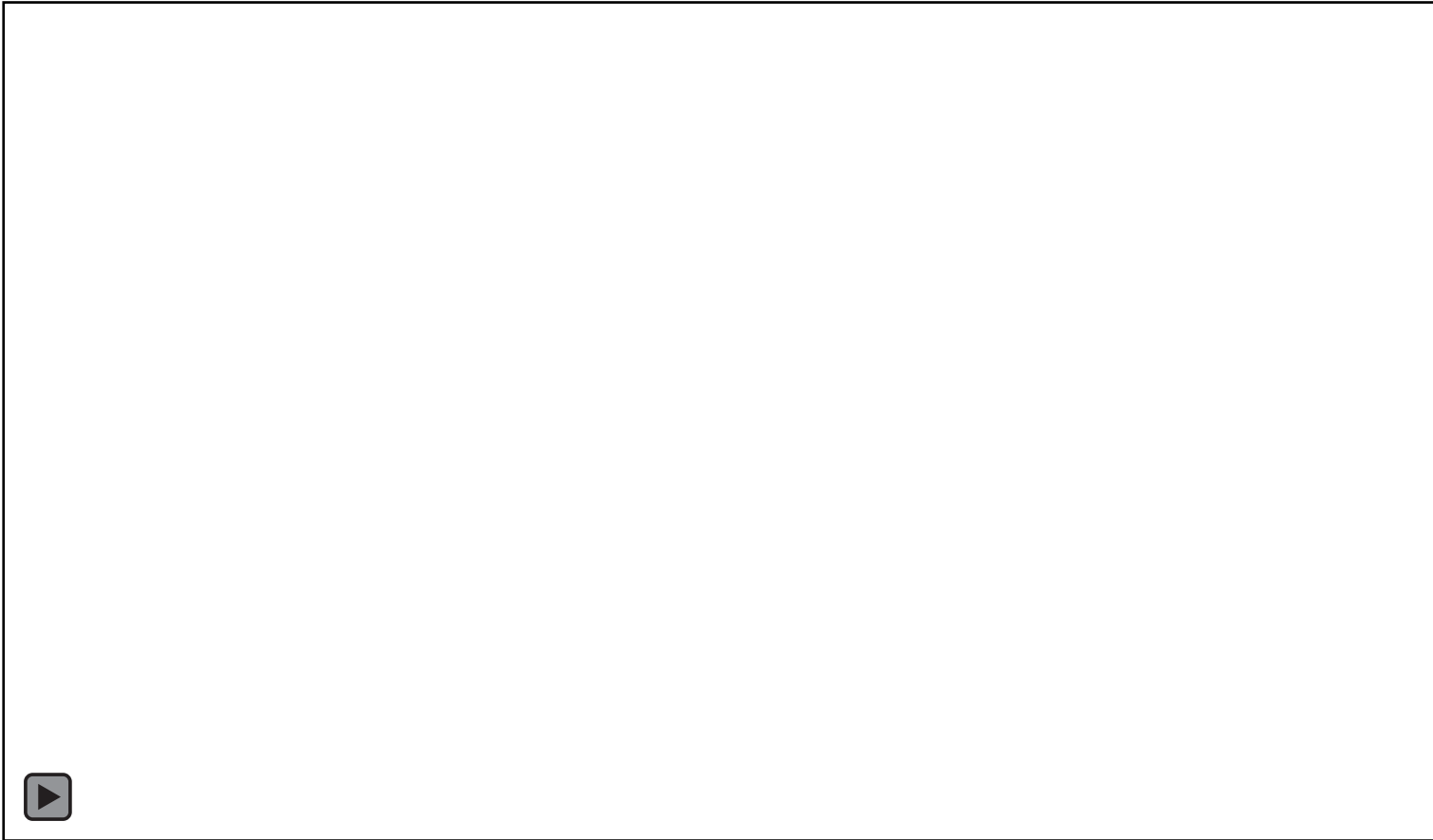
Demo: Form Builder

示範：表格建造功能



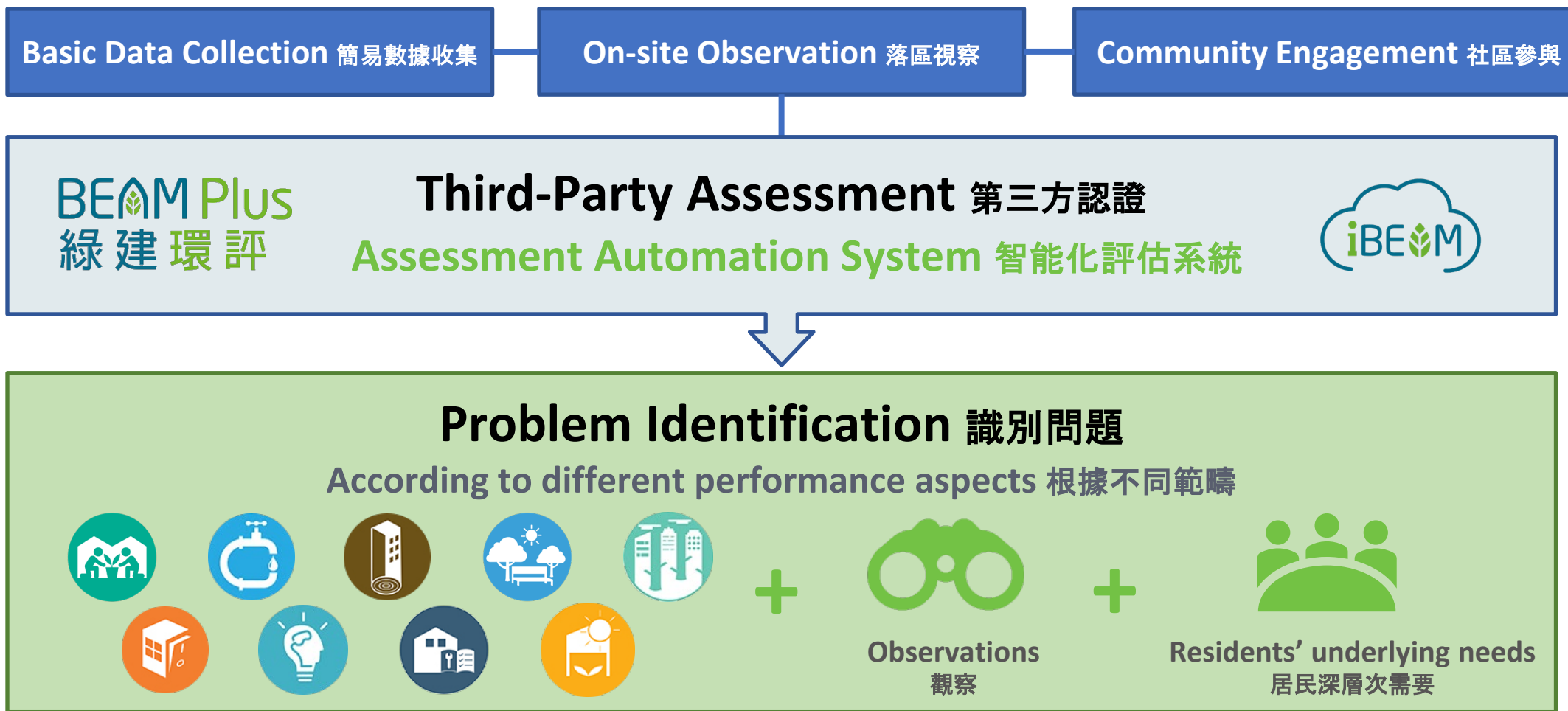
Demo: Credit Assessment

示範：範疇評估



Data Benchmarking

基準分析



Sustainable Planning

可持續規劃

Problem Identification 識別問題



Sustainable Planning 可持續規劃

1. Find solutions
aiming at specific
problems
尋找問題根源



2. Adopt preventive
measures in aging
buildings
為樓宇老化訂立預防措施



3. Identify policies and
resources for future
planning
為未來規劃識別相關政策
及資源



Way Forward

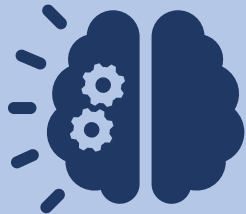
遠景

Anyone can do data analysis + community planning!

齊來推展數據分析+ 社區規劃!

Suggesting
solutions for the
community

為社區環境提供建議



Updating policies
to align with the
current needs

更新政策以符合當前需要



Seeking capital for
improvement and
more...

尋找資產改善資本及更多...



Thank You 謝謝



Tel: +852 3610 5700
E-mail: enquiry@beamsociety.org.hk
Website: www.beamsociety.org.hk
Address: 1/F, Jockey Club Environmental Building,
77 Tat Chee Avenue, Kowloon Tong, Hong Kong



BEAM
建築環保評估協會